

CONVENTION ON INTERNATIONAL TRADE IN ENDANGERED SPECIES
OF WILD FAUNA AND FLORA

Sixteenth meeting of the Conference of the Parties
Bangkok (Thailand), 3-14 March 2013

CONSIDERATION OF PROPOSALS FOR AMENDMENT OF APPENDICES I AND II

A. Proposal

Inclusion of *Lamna nasus* (Bonnaterre, 1788) in Appendix II in accordance with Article II 2(a).

Qualifying Criteria (Conf. 9.24 (Rev. CoP15))¹

Annex 2a A: *It is known, or can be inferred or projected, that the regulation of trade in the species is necessary to avoid it becoming eligible for inclusion in Appendix I in the near future.*

North and Southwest Atlantic and Mediterranean stocks of *Lamna nasus* qualify for listing under this criterion, because their marked decline in population size meets CITES' guidelines for the application of decline to commercially exploited aquatic species. The largest global stocks of this low productivity shark have experienced historical declines to significantly less than 30% of the baseline – the Appendix II trigger – as a result of unsustainable target and bycatch fisheries driven largely or partly by international trade demand for its high value meat. These stocks are now under management in some EEZs, but the greatest continuing threat to the species is unsustainable harvesting elsewhere to supply international trade in meat and fins.

Annex 2a B: *It is known, or can be inferred or projected, that regulation of trade in the species is required to ensure that the harvest of specimens from the wild is not reducing the wild population to a level at which its survival might be threatened by continued harvesting or other influences.*

Based on past fisheries' development to meet international trade demand, including shifting of effort from Northeast to Northwest Atlantic stocks, and a rapid recent rate of decline in catch per unit effort data for some southern stocks, it can be projected that southern hemisphere populations have experienced or are likely to undergo similar declines, triggering consideration for Appendix 1, unless international trade regulation provides the incentive to introduce sustainable management and/or improve existing management and monitoring regimes to provide a basis for non-detriment and legal acquisition findings.

Annotation: **The entry into effect of the inclusion of *Lamna nasus* in Appendix II of CITES will be delayed by 18 months to enable Parties to resolve related technical and administrative issues².**

B. Proponent

Brazil, Comoros, Croatia, Denmark³ and Egypt.⁴

¹ Interpretation & application of Res. Conf. 9.24 (Rev. CoP14) applied here is described in more detail in Annex 5.

² E.g. the designation of an additional Management Authority and adoption of Customs codes.

³ On behalf of the European Union Member States acting in the interest of the European Union.

⁴ The geographical designations employed in this document do not imply the expression of any opinion whatsoever on the part of the CITES Secretariat or the United Nations Environment Programme concerning the legal status of any country, territory, or area, or concerning the delimitation of its frontiers or boundaries. The responsibility for the contents of the document rests exclusively with its author.

C. Supporting statement

1. Taxonomy

- 1.1 Class: Chondrichthyes (Elasmobranchii)
1.2 Order: Lamniformes
1.3 Family: Lamnidae
1.4 Species: *Lamna nasus* (Bonnaterre, 1788)
1.5 Scientific synonyms: See Annex 2.



(c) D. Weber/D.E.G.

Figure 1. Porbeagle *Lamna nasus*

- 1.6 Common names:
- | | |
|---------------|--|
| English: | Porbeagle, mackerel shark |
| French: | Requin-taupe commun, loutre de mer, (market name: veau de mer) |
| Spanish: | Marrajo sardinero; cailón marrajo, moka, pinocho |
| Danish: | Sillhaj, sildehaj |
| German: | Heringshai (market names: kalbsfisch, see-stör) |
| Italian: | Talpa (market names: vitello di mare, smeriglio) |
| Japanese: | Mokazame |
| Portuguese: | Tubarão-sardo, tubarão golfinho, cavalha |
| South Africa: | Haringhaai |
| Swedish: | Håbrand, haamar, sillhaj |
- 1.7 Code numbers: n/a

2. Overview

- 2.1 This proposal is significantly updated since CoP15: EU trade data are added, following the introduction of species-specific codes in 2010. New data added from the FAO Expert Panel report (2010a) (which concluded that available evidence supports the proposal to include *Lamna nasus* in CITES Appendix II). Declines in Southern stocks mean that the look-alike criterion (Annex 2bA) is not used. A fin identification guide is provided (Annex 8).
- 2.2 An Appendix II listing is proposed for porbeagle shark (*Lamna nasus*) in accordance with Article II.2 (a) of the Convention and Res.Conf. 9.24 (Rev. CoP15). Stock assessments describe marked historic and recent declines to significantly less than 30% of baseline for the largest Atlantic populations. Exploitation of smaller stocks in Southern Hemisphere oceans is largely unmanaged and unlikely to be sustainable. The latest review of trend data for the porbeagle (section 4.4) indicates that populations formerly proposed for listing under the criterion of Annex 2b A ("look-alike") qualify for listing under Annex 2a B (FAO 2011).
- 2.3 *Lamna nasus* meets the guidelines suggested by FAO for the listing of commercially exploited aquatic species. It falls into FAO's lowest productivity category of the most vulnerable species: those with an intrinsic rate of population increase of <0.14 and a generation time of >10 years (FAO 2001, section 3.3). It is highly vulnerable to over-exploitation in fisheries and very slow to recover from depletion. It is taken in target fisheries and is an economically-important retained and utilised catch of some pelagic longline fisheries (section 5). Meat and fins are of high quality and high value in international trade. Trade records are generally not species-specific; international trade levels, patterns and trends are largely unknown (section 6). DNA tests for parts and derivatives in trade are available (section 11.2.2).
- 2.4 Extent and rate of decline of the majority of the global population significantly exceed the qualifying levels for listing in Appendix II. Some stocks already qualify for consideration for Appendix I (section 4.4). Unsustainable North Atlantic target *L. nasus* fisheries are well documented. These have depleted stocks severely; landings fell from thousands of tonnes to a few hundred in less than 50 years. Joint assessments of North and Southwest Atlantic stocks by ICCAT SCRS and ICES⁵

⁵ The Standing Committee on Research and Statistics (SCRS) of the International Commission for the Conservation of Atlantic Tunas (ICCAT) and the International Council for the Exploration of the Seas (ICES).

(2009) have identified marked declines to significantly less than 30% of historic baseline. Mediterranean catch per unit effort (CPUE) has declined to less than 5% of baseline. More limited data from other Southern Hemisphere stocks, which are also a high value target and secondary catch of longline fisheries and are biologically less resilient to fisheries than North Atlantic stocks, also suggest declining trends (section 4.4).

- 2.5 Quota management based on stock assessment and scientific advice commenced in Canada's Exclusive Economic Zone (EEZ) in 2002 (the stock has now stabilised under a rebuilding plan), and in the EU since 2008 (with a zero quota since 2010). Unrestrictive quota management began in the US in 1999 (but the quota was greatly reduced in 2008, and has led to fishery closure in recent years) and in New Zealand in 2004. Argentina requires live bycatch of large sharks to be released alive. Unregulated and unreported high seas catches jeopardize national management and stock recovery plans. At the time of writing, Regional Fishery Management Organisations (RFMOs) had not yet set high seas catch limits (NEAFC fisheries do not target porbeagle and release bycatch alive) (section 8).
- 2.6 An Appendix II listing for *Lamna nasus* will ensure that international trade is supplied by sustainably managed, accurately recorded fisheries that are not detrimental to the status of the wild populations that they exploit. This can be achieved if non-detriment findings require that an effective sustainable fisheries management programme be in place and implemented before export permits are issued, and by using other CITES measures for the regulation and monitoring of international trade, particularly controls upon Introductions from the Sea. Trade controls will complement and reinforce traditional fisheries management measures, thus also contributing to implementation of the UN FAO IPOA-Sharks.

3. Species characteristics

3.1 Distribution

Lamna nasus is found in a circumglobal band of ~30–60°S in the Southern Hemisphere and mostly between 30–70°N in the North Atlantic Ocean and Mediterranean (Figure 3). Annex 3 lists Range States and FAO Fishing Areas (Figure 4).

3.2 Habitat

L. nasus is epipelagic in boreal and temperate seas of 2–22°C, but prefers 5–10°C in the Northwest Atlantic (Campana and Joyce 2004, Forselle 2012, Svetlov 1978), from the surface to 200m deep, occasionally to 350–700m. Most commonly reported on continental shelves and slopes from close inshore (especially in summer), to far offshore (where often associated with submerged banks and reefs). They are apparently less abundant in the high seas outside 200 mile EEZs (Campana and Gibson 2008). Stocks segregate (at least in some regions) by age, reproductive stage and sex and undertake seasonal migrations within their stock area. (Campana *et al.* 1999, 2001, Campana and Joyce 2004, Compagno 2001, Jensen *et al.* 2002.) Mature females tagged off the Canadian coast appear to migrate 2000km south to give birth in deep water in the Sargasso Sea, Central North Atlantic; pups presumably follow the Gulf Stream to return north (Campana *et al.* 2010a).

3.3 Biological characteristics

L. nasus is active, warm-blooded, relatively slow growing and late maturing, long-lived, and bears only small numbers of young. It falls into FAO's lowest productivity category of most vulnerable aquatic species and is the most vulnerable Northern European pelagic shark (Anon. 2012). Life history characteristics vary between stocks (see Table 2). Northeast Atlantic sharks are slightly slower growing than the northwestern stock. Both northern stocks are much larger, faster growing and have a shorter life span than the smaller, longer-lived (~65 years old) southern porbeagles, which are therefore of even lower productivity and more vulnerable to overfishing than are North Atlantic stocks (Francis *et al.* 2008, 2009; Forselle 2012).

3.4 Morphological characteristics

Heavy cylindrical body, conical head and crescent-shaped tail (Figure 1). The distinctive white patch on the lower trailing edge of the first dorsal fin is used to identify fins in trade (Pew Environment Group 2012).

3.5 Role of the species in its ecosystem

L. nasus is an apex predator, feeding on fishes, squid and small sharks (Compagno 2001, Joyce *et al.* 2002). It has few predators other than humans, but may be eaten by orcas and white sharks (Compagno 2001). Stevens *et al.* (2000) warn that the removal of top marine predators may have a disproportionate and counter-intuitive impact on fish population dynamics, including by causing decreases in some prey species. DFO Canada (2006) could not demonstrate an ecosystem role at present low stock levels.

4. Status and trends

4.1 Habitat trends

Critical *L. nasus* habitats and threats to these habitats are largely unknown, although some North Atlantic mating grounds have been identified. High levels of ecosystem contaminants (PCBs, organo-chlorines and heavy metals) that bio-accumulate and are bio-magnified at high trophic levels are associated with infertility in sharks (Stevens *et al.* 2005), but their impacts on *L. nasus* is unknown. Effects of climatic changes on ocean temperatures, pH and related biomass production could potentially impact populations.

4.2 Population size

Effective population size (as defined in Resolution Conf. 9.24 (Rev. CoP15) Annex 5), is best defined by the number of mature females in the population, particularly in heavily fished stocks dominated by immatures or males⁶. The only stock for which population size data are available is in the Northwest Atlantic. Recent stock assessments (DFO 2005a, Campana and Gibson 2008, Campana *et al.* 2010b, ICCAT/ICES 2009, Figure 16) estimated the total population size for this stock as 188,000–195,000 sharks (22–27% of original numbers prior to the fishery starting; possibly 800,000 to 900,000 individuals) but only 9,000–13,000 female spawners (12–16% of their original abundance and 83–103% of abundance in 2001). Stock size elsewhere is unknown.

4.3 Population structure

Genetic studies identified two isolated populations, in the North Atlantic and the Southern oceans (Shivji 2010, Pade *et al.* 2006). There are possibly separate stocks in the Northeast and Northwest Atlantic (these were historically the largest global stocks), likely also in the Mediterranean, and in the Southeast and Southwest Atlantic. The latter extend into the Southwest Indian Ocean and Southeast Pacific, respectively, but Southern Hemisphere stock boundaries are unclear and other Indo-Pacific stocks have not been identified. Tagging studies show long distance movements occur within each stock. *L. nasus* tagged off the UK have been recaptured off Spain, Denmark and Norway, and sharks tagged off Ireland have travelled to the mid-Atlantic Ridge and near Madeira (Northwest Africa) (Saunders *et al.* 2011). Only one tagged shark has been recovered after crossing the Atlantic (Campana *et al.* 1999, Kohler *et al.* 2002, Stevens 1990), but new telemetry studies may demonstrate greater connectivity between the Northwest and Northeast Atlantic stocks (R Saunders pers. comm. 2012). *L. nasus* tagged in Canadian waters move onto the high seas for unknown periods of time (Campana and Gibson 2008), including to pupping grounds in the Sargasso Sea (Campana *et al.* 2010a). The structure of exploited populations is highly unnatural, with very few large mature females present (3–5% of the Uruguayan catch (Forselledo 2012). This results in an extremely low reproductive capacity in heavily fished, depleted stocks (e.g. Campana *et al.* 2001).

4.4 Population trends

Almost all population trend indices (percentage declines from baseline, or recent declines) are clearly within the threshold for at least an Appendix II listing, if not Appendix I. These trends are summarized in Figure 2 and Tables 1 and 3, presented in the context of Annex 5 of Conf. 9.24 (Rev. CoP15) and FAO (2001).

⁶ The FAO guidance for evaluating commercially aquatic species for listing in CITES (FAO 2001) stresses the importance of this consideration.

The estimated generation time for *L. nasus* is at least 18 years in the North Atlantic, and 26 years in the Southern Oceans (Table 2). The three-generation period against which to assess recent declines is therefore 54 to 78 years, greater than the historic baseline for most stocks. Trends in mature females (the effective population size⁷) must be considered where possible. Stock assessments for *L. nasus* (ICCAT SCRS/ICES 2009) usually show a correlation between declining landings, declining catch per unit effort (CPUE), and reduced biomass, because market demand and prices have always been high and there has, until recently, been little or no restrictive management. Where no stock assessments are available, CPUE, mean size and landings are therefore used as metrics of population trends for this valuable commercial species in unmanaged fisheries elsewhere, while recognizing that other factors may also affect catchability.

The IUCN Red List status assessment for *L. nasus* is **Vulnerable** globally, **Critically Endangered** in the Northeast Atlantic and the Mediterranean (past, ongoing and estimated future reductions in population size exceeding 90%), **Endangered** in the Northwest Atlantic (estimated reductions exceeding 70% that have now ceased through management), and **Near Threatened** in the Southern Ocean (Stevens *et al.* 2005).

Historic fisheries are summarised in Annex 4. The North Atlantic has historically been the major reported source of world catches, with detailed long-term fisheries trend data available. Landings here have exhibited marked declining trends over the past 60–70 years (see below) during a period of rising fishing effort and market demand for this valuable species and improved fisheries technology. Reported North Atlantic catches (FAO-FIGIS FISHSTAT) during the past decade were less than 10% of those during the past 50 years (only partly due to the recent introduction of restrictive catch quotas). Fewer southern hemisphere catch data are available (reporting to FAO commenced in the 1990s), but some of these also show declining trends. FAO *L. nasus* catch data (Figure 5) are generally lower than that from other sources (national landings, ICES data *etc.*). Under-reporting is widespread, ‘grossly’ so in the South Atlantic (ICCAT SCRS/ICES 2009). Landings from the NAFO Regulatory Area reported to NAFO “*seldom resembled those reported to ICCAT. 2005–2006 catches by countries other than Canada are in doubt and probably under reported*” (Campana and Gibson 2008). Clarke and Harley (2010) refer to the non-reporting of catches to the Western Central Pacific Fisheries Commission (WCPFC), including by some of the largest shark catching nations.

4.4.1 North Atlantic and Mediterranean

Annex 4 describes historic fisheries. The fisheries targeting seriously depleted shelf stocks in Northeast and Northwest Atlantic EEZs are now under stringent management. High seas tuna and swordfish longline fisheries also exploit these stocks (as a target or valuable secondary catch) in the NAFO, ICCAT and GFCM regulatory areas, where *L. nasus* catches remain largely unregulated, except for shark finning bans.

Northeast Atlantic: The Northeast Atlantic age structured production model stock assessment estimated a decline from baseline of over 90%, to 6% of biomass and 7% of numbers (far below the maximum sustainable yield (MSY)). An alternative surplus production model estimated that biomass had declined to between 15% and 39% of baseline, and by more than 50% from the level in 1972, to well below MSY (ICCAT SCRS/ICES 2009; Figures 13 and 14.) During this period, total Northeast Atlantic landings declined to 13% of their 1930s levels (Figure 7), tracking the decline in stock biomass. ICES 2012 does not update this assessment.

⁷ The FAO guidance for evaluating commercially aquatic species for listing in CITES (FAO 2001) stresses the importance of this consideration.

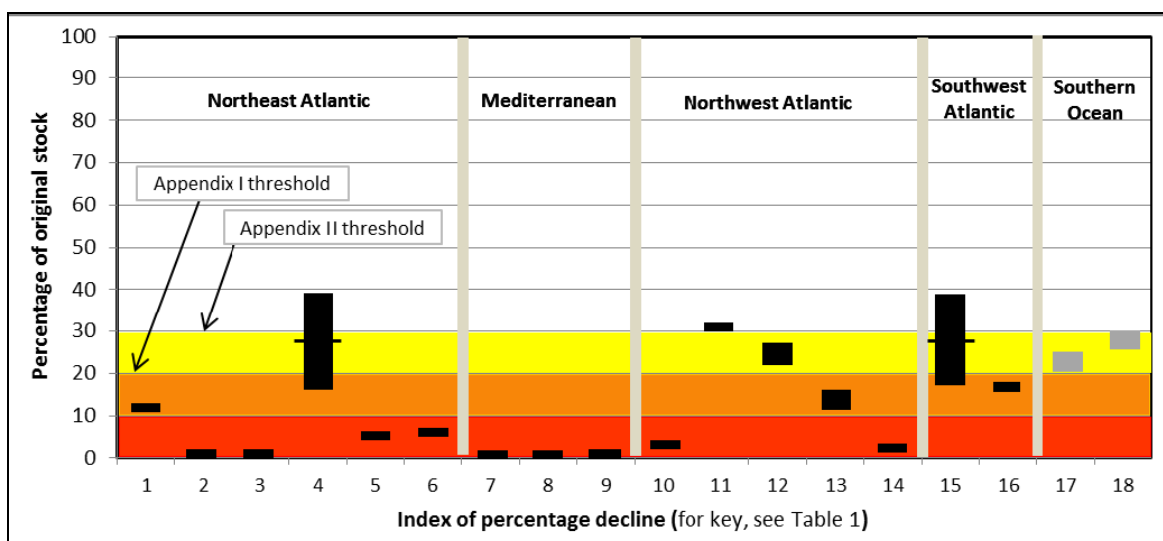


Figure 2. Decline trends for porbeagle *Lamna nasus* stocks (from FAO 2010a & sources cited in Section 4).

Stock declines from historic baseline are indicated in black, recent declines (≤ 3 generations, or 50 years) in grey. Median and range are indicated where appropriate for stock assessments. A low productivity species that has declined to 15–20% of baseline (orange) can be considered for listing in Appendix I, or if within 20–30% of baseline (yellow), for listing in Appendix II (see footnote to Annex 5 of Res. Conf. 9.24 (Rev. CoP15)).

Table 1. Indices of percentage decline (trends recorded as % of baseline) illustrated in Figure 2.

	Index	Trend
Northeast Atlantic		
1	All landings	13%
2	Norwegian landings	1%
3	Danish landings	1%
4	Biomass (surplus production model)	15–39%
5	Biomass (age structured production model)	6%
6	Stock abundance (age structured production model)	7%
Mediterranean		
7	All observations	1%
8	Ligurian Sea catches	1%
9	Ionian Sea CPUE	2%

See Table 3 (Annex) for Table 1 data sources.

	Index	Trend
Northwest Atlantic		
10	All landings	4%
11	Stock biomass (surplus production model)	32%
12	Stock abundance (age structured production model)	22–27%
13	Mature female abundance (age structured production model)	12–16%
14	Stock biomass (Bayesian surplus production model)	3%
Southwest Atlantic		
15	Stock biomass (surplus production model)	18–39%
16	Spawning Stock Biomass (age structured production model)	18%
Southern Oceans		
17	Recent NZ landings (see comments in 4.2.2)	25%
18	Recent NZ longline CPUE (see comments in 4.2.2)	30%
19	Recent Japanese bluefin tuna bycatch CPUE	no trend

Mediterranean Sea: *L. nasus* has virtually disappeared from Mediterranean records. Ferretti *et al.* (2008) reviewed historic logbook data, reporting declines in tuna traps of >99.99 % during a range of time series (135 to 56 years). FAO-FIGIS Fishstat (2012) only records very small landings. In the North Tyrrhenian and Ligurian Sea, Serena and Vacchi (1997) reported just 15 specimens of *L. nasus* during a few decades of observation. Soldo and Jardas (2002) report nine records in the Eastern Adriatic in the 20th century, with few records since (A. Soldo unpublished data). A few newborn and juvenile *L. nasus* were reported in the Ligurian and Adriatic Seas (Orsi Relini & Garibaldi 2002, Marconi & De Maddalena 2001). No *L. nasus* were caught during research into a western Mediterranean swordfish longline fishery (de la Serna *et al.* 2002). Only 15 specimens were caught during research conducted in 1998–1999 on large pelagic fisheries (mainly driftnets) in the southern Adriatic and Ionian Sea (Megalofonou *et al.* 2000). Single male sharks were reported in the Adriatic in 2010 and in 2011 (Scacco *et al.* 2012).

Northwest Atlantic: Detailed stock assessments and recovery projections are available (DFO 2005a & b; Gibson & Campana 2005; Campana & Gibson 2008; ICCAT SCRS/ICES 2009; Campana *et al.* 2010b). Spawning stock biomass (SSB) is currently estimated to be about 22–27% of the historic baseline in 1961, when fishing commenced (see Annex 4). The average size of sharks and catch rates were the smallest on record in 1999 and 2000, catch rates of mature sharks in 2000 were 10% of those in 1992, biomass was estimated as 11–17% of virgin biomass, and fully recruited *F* as 0.26 (DFO 2001a). Total population numbers have remained relatively stable since quotas were reduced in 2002 (see Section 8), although female spawners may have continued to decline slightly. ICCAT SCRS/ICES (2009) estimated that spawning stock biomass (SSB) is now about 95–103% of its size in 2001 and the number of mature females is 83% to 103% of the 2001 value (Figure 16), or 12–16% of baseline. The estimated number of mature females in 2009 is in the range of 11,000 to 14,000 individuals, or 12% to 16% of its 1961 level and just 6% of the total population (ICCAT SCRS/ICES 2009; Campana *et al.* 2010b). A Bayesian Surplus Production (BSP) model is more pessimistic, estimating the 2004 population to be just 3% of the 1961 biomass (Babcock & Cortes 2010).

Stock assessment models have determined that recovery is possible, but Campana *et al.* (2010b) warn that the trajectory is extremely low and sensitive to human-induced mortality. Human-induced mortality of ~2 to 4% of the vulnerable biomass of 4,500t to 4,800 t (equivalent to catching the 2005 quota of 185–192t) should allow recovery to 20% of virgin biomass ($SSN_{20\%}$) in 10–30 years. Recovery to maximum sustainable yield (SSN_{msy}) will take much longer: between 2030 and 2060 with no human-induced mortality, or into the 22nd century (or later) with an incidental harm rate of 4%. At an incidental harm rate of 7% of the vulnerable biomass, corresponding to a catch of only 315t, the population will not recover to SSN_{msy} (Figure 17), but Campana & Gibson (2008) warned that the high seas fisheries (see below) exploiting this stock jeopardize Canada's fisheries management and recovery plan – the population would crash at these exploitation rates.

Tuna longliners from Taiwan Province of China, the Republic of Korea and Japan take a largely unknown catch of *L. nasus* on the high seas in the North Atlantic (ICES 2005). Most of the catch is reportedly discarded or landed at ports near the fishing grounds. Stocks and catches are “under investigation” (Fishery Agency of Japan 2004). Estimates for Japan's mostly unreported high seas North Atlantic catch ranged from 15t to 280t annually during 2000–2002 (DFO 2005b), or ~200t in 2000 and 2001 (Campana & Gibson 2008). Furthermore, Campana *et al.* (2011) estimate that about 30t/yr of *L. nasus* die following discard from commercial Canadian fisheries alone. Stock assessments indicate that these levels of combined North Atlantic landings will prevent stock recovery.

4.4.2 Southern Hemisphere

The latest review of *L. nasus* trend data indicates that Southern Hemisphere populations formerly proposed for listing under the criterion of Annex 2b A (“look-alike”) actually qualify for listing under Annex 2a B. FAO-FIGIS FISHSTAT data have improved in recent years; southern hemisphere catch data are available for several countries since the mid-1990s (Figure 21), but some of the largest shark fishing nations are still not reporting catches (Clarke & Harley 2010). Available data show a declining trend, with New Zealand catches

dominating, followed by Spain (prior to the adoption of the EU zero quota for *L. nasus*) and Uruguay (FAO-FIGIS FISHSTAT). Catch data reported to ICCAT (e.g. Figure 12) illustrate the difficulty in interpreting such data when fisheries move between different fishing areas.

Observer data and logs from the Uruguayan tuna and swordfish long-line fleet showed a decline in *L. nasus* CPUE from 1982 to 2008 (Pons and Domingo 2010). These and other data were used to assess the status of the Southwest Atlantic stock. The assessment identified an 82% decline in biomass (SSB) since 1961, and 60% since 1982, to well below maximum sustainable level (B_{MSY}) (Figure 20, ICCAT SCRS/ICES 2009), mirroring the decline in CPUE. This stock probably extends into the Southeast Pacific. Data were not available to support an assessment of the Southeast Atlantic/Southwest Indian Ocean stock. The WCPFC and other Indo-Pacific RFMOs have not yet investigated *L. nasus* stock status (Clarke and Harley 2010).

New Zealand commercial catch and effort records are illustrated in Figure 18. Estimates of tuna longline bycatch of *L. nasus* are not available for all years and are imprecise because of low observer coverage. There has been an 86% decline in the total weight of *L. nasus* reported by New Zealand since 1998–99, to a low of 41 t in 2007–08. This decline was steepest during a four year period of rapidly increasing domestic fishing effort in the tuna longline fishery, but has stabilised since tuna longline effort dropped during the last four years. Unstandardised catch per unit effort recorded by observers from 1992–93 to 2005–06 (Figure 19) varies considerably, but has been extremely low in recent years. This trend may not reflect stock abundance because of low observer coverage and other potential sources of variation (e.g., vessel, gear, location and season), but these data were used to assess the stock as unlikely (<40%) to be at or above MSY (MFSC 2011). Australian and New Zealand shark research and management organisations are compiling data on the status and catch of porbeagle in Australasian waters and in due course may collaborate with the Secretariat of the Pacific Community to develop a stock assessment for porbeagle (Clarke & Harley 2010, Barry Bruce pers. comm.).

After blue sharks, porbeagle is one of the sharks commonly caught by Japanese Southern bluefin tuna longline vessels (Matsunaga 2009). Most of the catch is reportedly discarded or landed at ports near the fishing grounds (Fishery Agency of Japan 2004), but do not appear in FAO or most RFMO databases. Matsumoto (2005) reports an increase in catch from very low levels during 1989–1995 followed by a decline in annual landings to around 40% of original levels between 1997 and 2003. Standardised reported CPUE has varied from 1992 to 2002, but recent stock trends were deemed to be stable (Matsunaga and Nakano 2002). Matsunaga (2009) reported no *L. nasus* catch trend in the same fishery from 1992 to 2007, but these data are difficult to interpret. Different catches for ‘all sharks’ were reported to the CITES AC and to FAO in 2011 and 2012⁸ and the reliability of Japanese catch data has been questioned by the CCSBT⁹.

4.5 Geographic trends

This species now appears to be scarce, if not absent, in areas of the Mediterranean where it was formerly commonly reported (Ferretti *et al.* 2008, Stevens *et al.* 2006 – see section 4.4.1).

5. Threats

The principal threat to *L. nasus* worldwide is over-exploitation in target fisheries, which depleted the world’s largest North Atlantic stocks over 50 years ago (Figure 5, Annex 4), and as a secondary long-line catch or bycatch. Recent global reported *L. nasus* landings have decreased from 1 719t in 1999 to 746t in 2009 and 252t in 2010. The highest catches in 2009 and 2010 were from France (305t, 9t), Spain (239t, 70t), Canada (63t, 83t) and New Zealand (63t, 56t) (FAO FISHSTAT 2012), although ICCAT/ICES (2009) notes that reported landings “grossly underestimate actual landings” and FISHSTAT has no *L. nasus* data from Japan, Taiwan, Province of China or the Republic of Korea. A zero quota has since been set for EU waters, all EU fleets, and the NEAFC area. USA and Canadian fisheries are under strict quota management.

⁸ Total shark catches reported to FAO show a decreasing trend from 2003 to 2008, with a catch in 2008 of ~18,000t, while data provided to CITES AC shows an increasing trend over the same period, with a catch in 2008 of 37,400t

⁹ The Commission for the Conservation of Southern Bluefin Tuna, a Regional Fisheries Management Organisation.

However, other fisheries are also declining, even in the absence of restrictive management (e.g., in the southern hemisphere (Figure 21)). This species is particularly vulnerable to fisheries because, in the absence of management, adults and juveniles of all age classes are targeted (MFSC 2011, Francis *et al.* 2007). Furthermore, the life history characteristics of Southern Ocean porbeagles make them significantly more vulnerable to overfishing than the depleted North Atlantic stocks.

5.1 Directed fisheries

Intensive directed fishing for valuable *L. nasus* meat was the major cause of 20th Century population declines (see Annex 4). ICES (2005) noted: “*The directed [Northeast Atlantic] fishery for porbeagle stopped in the late 1970s due to very low catch rates. Sporadic small fisheries have occurred since that time. The high market value of this species means that a directed fishery would develop again if abundance increased.*” A target fishery for the meat of *L. nasus* still operates in Canada. The 2009 ICCAT SCRS/ICES stock assessment meeting recommended that high seas fisheries should not target porbeagle, but there is no quota management for high seas catches, except where these are covered by fleet regulations (e.g. NEAFC Parties, EU and Canadian quotas). *L. nasus* used to be an important target game fish species for recreational fishing in Ireland and UK. The recreational fisheries in Canada, the US and New Zealand are very small.

5.2 Incidental fisheries

L. nasus is a valuable secondary target of many fisheries, particularly longline pelagic fisheries for tuna and swordfish (Buencuerpo *et al.* 1998), but also gill nets, driftnets, trawls and handlines. This catch is often inadequately recorded or un-reported. The high value of *L. nasus* meat means that the whole carcass is usually retained and utilised, unless the hold space of vessels targeting high seas tuna and billfish is limited, when the fins alone may be retained in the absence of a finning ban. Approximately 60% of New Zealand longline bycatch is alive when retrieved, and about 80% of the catch is processed. Survival of unprocessed discarded sharks is estimated at 50% (Campana *et al.* 2011). ICES (2005) noted: “*effort has increased in recent years in pelagic longline fisheries for bluefin tuna (Japan, Republic of Korea and Taiwan, Province of China) in the North East Atlantic. These fisheries may take porbeagle as a bycatch. This fishery is likely to be efficient at catching considerable quantities of this species.*” This was confirmed by Campana and Gibson (2008). ICCAT/ICES (2009) warned that increased effort on the high seas could compromise stock recovery efforts.

While there is a large amount of oceanic fishing effort in the Southern Oceans, and several fleets catch *L. nasus* as part of their fishing activity, FAO records of capture production only commence in 1994 and are relatively low, with the exception of New Zealand, Spain and Uruguay. Japan’s *L. nasus* catch in southern ocean fisheries is largely unreported, but must be significant: porbeagle was the second most abundant shark species after blue shark and comprised 5.5% of observer records of shark catches in the Japanese tuna fishery operating under an access agreement in Australian waters (Stevens and Wayte 2008).

Spanish vessels used to retain the *L. nasus* catch from their longline swordfish fisheries, prior to the establishment of the zero EU quota, and Uruguay and other countries (some of which do not report to FAO) have a significant catch in longline swordfish and tuna fisheries in international waters off the Atlantic coast of South America (Domingo 2000, Domingo *et al.* 2001, Hazin *et al.* 2008, Forselleddo 2012).

Important but largely unreported secondary fisheries include demersal longlining and trawling for Patagonian toothfish and mackerel icefish around Heard and Macdonald Islands and in the southern Indian Ocean (van Wijk & Williams 2003, Compagno 2001), and the Chilean artisanal and industrial longline swordfish fishery, between 26–36°S, which records *L. nasus* (E. Acuña unpublished data; Acuña *et al.* 2002). Hernandez *et al.* (2008) found that *L. nasus* made up 1.7% of all fins tested in the north-central Chilean shark fin trade, and that 98% of fins labelled ‘Tintorera’ (50 specimens) were *L. nasus* (i.e. were correctly identified by the traders). Overall catches of *L. nasus* by Argentina were 30.1t, 17.7t, 19.8t and 69.7 t between 2003 and 2006 (INIDEP 2009) (these data did not appear in FAO FISHSTAT), but *L. nasus* captures by the Argentinean fleet are probably now limited to incidental captures by three Patagonian toothfish fishing vessels, and with strict measures in force to protect sharks in Argentinian waters (live sharks greater than 1.5 m must be released if caught), catches are likely to be minimal. There are observers on all Argentinean fleets, and an observer report for sharks (including *L. nasus*) is due to be released in 2012 (Ramiro Sanchez, pers. comm.).

6. Utilization and trade

Until recently, a lack of species-specific landings and trade data made it impossible to assess the proportions of global catches that supply national demand and enter international trade, although the high commercial value of the species has been documented through market surveys (Fleming & Papageorgiou 1997, Rose 1996, TRAFFIC unpublished). Survey findings indicated that the demand for fresh, frozen or processed *L. nasus* meat and fins was sufficiently high to justify the existence of an international market, while other products include dried-salted meat for human consumption, oil, and fishmeal (Compagno 2001). The extent of national consumption *versus* export by range States can vary considerably, depending upon local demand. For example, the EU market for porbeagle products is well documented, whereas other States with lower domestic seafood consumption, such as Uruguay, are likely to export its landings of porbeagle, mixed with mako, another high value shark meat (Andres Domingo pers. comm.). Following the introduction by the EU of new species-specific codes in 2010, some international trade data for this species is now becoming available (albeit only for trade involving the EU).

6.1 National utilization

L. nasus has long been one of the most valuable (by weight) of marine fish species landed in Europe, similar in value to and sometimes marketed as swordfish (Gauld 1989; Vas and Thorpe 1998; TRAFFIC unpublished; Vannuccini 1999). Porbeagle may also be utilised nationally in some range States for liver oil, cartilage and skin (Vannuccini 1999), however no significant national use of *L. nasus* parts and derivatives has been reported, partly perhaps because records at species level are not readily available, and partly because quantities landed are now so small, particularly in comparison with other shark species.

Sports fishers catch porbeagle in the USA, New Zealand and in some EU Member States. Catches may be retained for meat and/or trophies, or tagged and released (e.g. in EU). New Zealand's recreational catch is probably negligible, since *L. nasus* usually occur over the outer continental shelf or beyond (MFSC 2011).

6.2 Legal trade

All international trade in *L. nasus* products is unregulated and legal, unless involving those States that have prohibited the possession of and/or trade in shark products. There are no quantitative historic trade data because, prior to 2010, all global trade in *L. nasus* products was reported under general Customs commodity codes for shark species and could therefore not be differentiated from other species. In 2010, the EU introduced new species-specific Customs codes for fresh and frozen *L. nasus* products (excluding shark fins) and amended previous codes covering most shark species accordingly (Table 4). Other countries/territories still do not have species-specific codes in place for trade in this species, and continue to report its trade under general shark commodity codes, preventing analysis.

There is a considerable market for *L. nasus* products within the European Union (EU). EU Member States were responsible for 60–75% of FAO's global records of *L. nasus* catch in 2006 and 2007, prior to establishment of a TAC (which was reduced to zero for EU waters and EU fleets in 2010). EU market demand must now therefore be met by imports. EU imports and exports of *L. nasus* in 2010 and 2011, reported in EUROSTAT, are summarized in Tables 5 and 6 (excluding internal EU trade). The following range States (excluding other EU countries) were the principal suppliers of fresh and frozen *L. nasus* meat to the EU in 2010 and 2011 (the EU importer is shown in brackets): South Africa (Italy), Japan (Spain), Morocco (Spain), Norway (Germany and Denmark), the Faroe Islands (Denmark) and New Zealand (Bulgaria). A total of 50,500kg of *L. nasus* meat, worth EUR 128,425, was imported during this two year period.

South Africa does not have any directed fisheries for *L. nasus*, which is only occasionally caught in the South African pelagic long-line fishery. Therefore, the high quantities imported from South Africa into the EU are likely to be derived from foreign flagged vessels fishing outside South Africa's EEZ and landing in South African ports, including vessels from Japan, the Republic of Korea and Taiwan Province of China targeting tuna and tuna-like species (Source: TRAFFIC East and Southern Africa, 2011). At the time of writing, none of these fishing entities were regularly reporting *L. nasus* catches to FAO or RFMOs. Two non-range States (previously unknown players in the market for this species) also reported exports to the EU in 2010 and 2011: Senegal and Suriname. However, determining the origin of the meat in trade is fraught with difficulties (as noted for South Africa).

Average prices of imports ranged from only 1.26 EUR/kg for meat imported from Japan to 3.64 EUR/kg for meat imported from the Faroe Islands. This is significantly lower than prices reported in earlier years for *L. nasus* landed into European ports and of meat (vitello di mare) seen for sale at 12.80 EUR/kg in Venice Fish Market, Italy, in November 2010 (pers. comm. Mats Forslund, WWF-SE).

The EU also reported significant exports of *L. nasus*, totalling 141,300kg in 2010 and 2011. These may have been exports of catches landed and frozen in 2009, before the zero quota, or re-exports. Morocco was by far the largest destination of *L. nasus* exported from the EU, followed by Afghanistan. However, the price of *L. nasus* exported to Morocco was very low (average 0.70 EUR/kg) compared to 17.81 EUR/kg for *L. nasus* exported to China and 2-4 EUR/kg for *L. nasus* exported to Ceuta (Spanish territory in North Africa), Andorra, Afghanistan, Switzerland and Turkey. All exports from the EU were from Spain, except those to Switzerland which came from Denmark. Earlier studies had reported that Canada exports *L. nasus* meat to the US and the EU, Japan exports to the EU, EU Member States export *L. nasus* to the US, where it is mainly consumed in restaurants (Vannuccini 1999, S. Campana *in litt.* to IUCN Shark Specialist Group 2006) and that it is also imported by Japan (Sonu 1998). The new EU trade data confirm exports from Japan to the EU, but there were no records of the EU importing *L. nasus* from Canada, or of the EU exporting (or re-exporting) it to the US, as reported in earlier studies.

EUROSTAT also records intra-EU trade – dispatches (equivalent to exports within the EU) and arrivals (equivalent to imports). Although total amounts of specific commodities in trade are difficult to estimate, due to the movement of commodities between EU Member States and different sources/methods used to report this trade, intra-EU trade data can provide an indication of the most important Member States involved in the trade. In 2010 and 2011 Spain (~58%) and Italy (~32%) were the principal destinations for trade of *L. nasus* commodities (fresh and frozen) within the EU, and Spain (~80%) and Portugal (~15%) were the principal suppliers of products traded within the EU.

6.3 Parts and derivatives in trade

Meat: This can be a very high value product, one of the most palatable and valuable of shark species, and is traded in fresh and frozen form (see sections 6.1 and 6.2).

Fins: Porbeagle appears in the list of preferred species for fins in Indonesia (Vannuccini 1999), but was reported to be relatively low value by McCoy & Ishihara (1999, quoting Fong & Anderson 1998). The large size of *L. nasus* fins nonetheless means that these are a relatively high value product. They have been identified in the fin trade in Hong Kong and are one of six species frequently used in the global fin market (Shivji *et al.* 2002). The raw fins are also readily recognised to species level by fin traders in Chile (Hernandez *et al.* 2008). New Zealand has established conversion factors for *L. nasus* for wet fin (45) and dried fin (108) (equivalent to a weight ratio of 2.2% and 0.9% respectively) in order to monitor quota and establish the size of former catches by scaling up reported landings (Ministry of Fisheries, 2005). The wet fin weight ratio from the Canadian fishery is 1.8–2.8% (S. Campana pers. comm., DFO).

Others: Porbeagle hides can be processed into leather, and liver oil extracted (Vannuccini 1999, Fischer *et al.* 1987), but trade records are not kept. Cartilage is probably also processed and traded. Other shark parts are used in the production of fishmeal, which is probably not a significant product from *L. nasus* fisheries because of the high value of its meat (Vannuccini 1999). There is limited use of jaws and teeth as marine curios.

6.4 Illegal trade

No species-specific legislation has been adopted by range States or trading nations to regulate national or international trade in *L. nasus*. The important national fisheries management measures adopted to allow populations to recover are vulnerable to violation/infringement in the absence of species-specific trade monitoring and regulation. An increasing number of States are prohibiting all trade in shark products or just trade in shark fins – none are *L. nasus* range States (Anon. 2012).

6.5 Actual or potential trade impacts

The unsustainable *L. nasus* fisheries described have been driven by the high value of the meat in national and international markets. Trade has therefore been the driving force behind the serial

depletion of populations in the North Atlantic (see Annex 4) and, with the closure of the major northern fisheries, now threatens formerly lightly fished Southern Hemisphere populations. Southern populations are of particular concern because they are intrinsically even more vulnerable to over-exploitation in fisheries than are the depleted northern stocks.

7. Legal instruments

7.1 National

It has been forbidden to catch and land *L. nasus* in Sweden since 2004. In 2007 Norway adopted ICES advice and banned all direct fisheries for *L. nasus*. From 2007–2011 specimens taken as bycatch had to be landed and sold. From 2011, live specimens must be released, whereas dead specimens can (not must) be landed and sold. Reporting was extended to include the number of specimens landed in addition to weight. From 2011, the regulations also include recreational fishing. Argentina requires live bycatch of large sharks to be released alive. The Committee on the Status of Endangered Wildlife in Canada (COSEWIC) designated *L. nasus* as Endangered in 2004 (COSEWIC 2004). The Federal Government of Canada declined to list it under Schedule 1 of Canada's Species at Risk Act because recovery measures were being implemented.

Many range States have finning bans, or have prohibited all shark fishing in their waters. A few range States have legally binding fisheries regulations for *L. nasus*. For example, EC Regulations have prohibited fishing for *L. nasus* in EU waters since 2010, and EU vessels may not fish for, retain on board, tranship or land *L. nasus* from international waters (EU Regulation 43/2012 and Council Regulation 44/2012). Fisheries management measures are described under 8.1.

7.2 International

'Family Isurida' (now Lamnidae, including *L. nasus*) is listed in Annex 1 (Highly Migratory Species) of the UN Convention on the Law of the Sea (UNCLOS), but no listed oceanic shark species is managed under the UN Agreement on Straddling Fish Stocks and Highly Migratory Fish Stocks (in force since 2001).

L. nasus is included in Appendix II of the Convention on the Conservation of Migratory Species (CMS) and the Annex to the Migratory Sharks Memorandum of Understanding (signatories will meet in September 2012). *L. nasus* has been uplisted to Annex II (Endangered or Threatened Species) of the Barcelona Convention Protocol concerning specially protected areas and biological diversity (SPA/BD) in the Mediterranean. Parties are required to protect and aid the recovery of these species. In May 2012, GFCM prohibited the retention on board, transshipment, landing, transfer, storage, sale, or display for sale of all shark species listed in Annex II of this Protocol. The Mediterranean population is also in Appendix III of the Bern Convention on the Conservation of European Wildlife and Habitats, as a species whose exploitation must be regulated to keep its population out of danger. *L. nasus* is included in the Annex V list of Threatened and/or Declining Species and Habitats of the OSPAR Convention for the Protection of the Marine Environment of the North-east Atlantic.

8. Species management

8.1 Management measures (fisheries management)

The International Plan of Action (IPOA) for the Conservation and Management of Sharks urges all States with shark fisheries to implement conservation and management plans, but is voluntary. In 2012, only 47 countries (33% of the 143 countries reporting catches to FAO) had adopted an NPOA. Thirty of these have each reported less 1% of the world's shark catches to FAO since 2000. Twenty-six shark fishing states and entities are responsible for at least 1% of global shark catches reported to FAO, totalling 84% of catches in aggregate. Nine of the 26 (35%) have not yet adopted their NPOA. Four of the world's major shark fishing nations have not yet addressed implementation of the IPOA–Sharks (Fischer *et al.* 2012). *L. nasus* range and/or fishing States with Shark Plans include Argentina, Australia, Canada, the EU, Japan, New Zealand, Spain, Taiwan, Province of China, Uruguay and USA. *L. nasus* is listed as a "High Priority" species in Uruguay's Shark Action Plan.

Many RFMOs have banned shark finning. Some have adopted resolutions to support improved recording or management of pelagic sharks taken as bycatch in the fisheries they manage, and/or have prohibited the retention of threatened species, but none have yet adopted science-based catch

limits. ICCAT has required Parties since 2007 to reduce the mortality of *L. nasus* in directed Atlantic fisheries where a peer-reviewed stock assessment is not available, but compliance is not monitored. In 2008, the NAFO Scientific Council was warned that overfishing in the high seas NAFO Regulatory Area was undermining Canada's management for *L. nasus* and would lead to population crash (Campana & Gibson 2008), but Parties decided that shark management was ICCAT's remit. Although a stock assessment was prepared in 2009, neither ICCAT nor NAFO have adopted proposals to introduce catch limits or to prohibit the retention of *L. nasus* caught on the high seas. An ICCAT Ecological Risk Assessment (ICES SCRS/2012/079) found *L. nasus* to be the most vulnerable pelagic species (followed by shortfin mako, thresher, blue shark, and swordfish). Parties to the North-east Atlantic Fisheries Commission (NEAFC), which covers fisheries not under ICCAT's remit, have agreed since 2010 not to target *L. nasus* and to release incidental catches alive.

The management of southern *L. nasus* stocks will require close coordination between several RFMOs in the Atlantic, Pacific and Indian Ocean and the Commission for the Conservation of Antarctic Marine Living Resources (CCAMLR). CCAMLR (2006) adopted a moratorium on directed shark fishing until data become available to assess the impacts of fishing on sharks in the Antarctic region. Live release of sharks taken as bycatch is encouraged (not mandated). The Western and Central Pacific Fisheries Commission (WCPFC), established in 2004, is responsible for pelagic shark management. It has not yet addressed *L. nasus*, which is identified as a key species by the Scientific Committee. Commission Members, Cooperating non-Members, and participating Territories are required to report catch, effort and discard data (WCPFC 2010).

The conservation and management of sharks in EU waters falls under the European Common Fishery Policy, which manages fish stocks through a system of Total Allowable Catch (TAC or annual catch quotas) and reduction of fishing capacity. The Community Action Plan for the Conservation and Management of Sharks (CPOA, EU COM(2009) 40 final) sets out to rebuild depleted shark stocks fished by the EC fleet within and outside EC Waters. The CPOA's Shark Assessment Report pays particular attention to *L. nasus*, which has been under legally-binding EU management in EC and international waters since 2008 (see Section 7.1).

Information on national management measures and legislation (including in Australia, Canada, EU member States, New Zealand, Norway and the USA) is summarised in Annex 6.

8.2 Population monitoring

Routine monitoring of catches, collection of reliable data on indicators of stock biomass and good knowledge of biology and ecology are required to support sustainable fisheries management. Most States do not record shark catch, bycatch, effort and discard data at species level or undertake fishery-independent surveys, preventing stock assessments and population evaluation. High seas catches are particularly poorly monitored (e.g. Campana and Gibson 2008, Clarke and Harley 2010). FAO and RFMO data are incomplete. Accurate trade data provide a means of confirming landings and an indication of compliance with catch levels, allow new catching and trading States to be identified, and provide information on trends in trade (Lack 2006). Trade data for *L. nasus* are, however, unreported except in the EU. FAO (2010a) noted that a CITES listing is expected to result in better monitoring of catches entering international trade from all stocks and could therefore have a beneficial effect on the management of the species in all parts of its range. In the absence of a CITES listing there is no reliable mechanism to track trends in catch and trade of *L. nasus*.

8.3 Control measures

8.3.1 International

Other than sanitary regulations related to seafood products and measures that facilitate the collection of import duties, there are no controls or monitoring systems to regulate or assess the nature, level and characteristics of trade in *L. nasus*.

8.3.2 Domestic

Domestic fisheries management measures described above and listed in Annex 6, cannot deliver sustainable harvest of *L. nasus* when stocks are exploited by several fleets, particularly in unregulated and unreported high seas fisheries. Even where catch quotas have been established, no trade measures prevent the sale or export of landings in excess of

quotas. STECF (2006) noted that although a CITES Appendix II listing alone would not be sufficient to regulate catching of *L. nasus*, it could be considered an ancillary measure. FAO (2010a) considered that regulation of international trade through listing in CITES Appendix II could strengthen national efforts to keep harvesting for trade commensurate with stock rebuilding plans. The usual hygiene regulations apply to control of domestic trade and utilisation.

8.4 Captive breeding and artificial propagation

No specimens are known to be bred in captivity.

8.5 Habitat conservation

Research in areas fished by Canadian and French fleets and telemetry studies have identified some important *L. nasus* habitat, within EEZs and on the high seas. Some habitat may be incidentally protected inside marine protected areas or static gear reserves, but there is no protection for critical high seas habitat.

9. Information on similar species

L. nasus is one of five species in family Lamnidae (mackerel sharks), including white shark *Carcharodon carcharias* and two species of mako, genus *Isurus*. Salmon shark *Lamna ditropis* occurs in the North Pacific. Porbeagle and Mako *Isurus oxyrinchus* may be confused in some fisheries, despite good keys being available (e.g. Fernández-Costa & Mejuto 2009).

10. Consultations

Ten range states responded, several of them providing additional information that has been incorporated into the proposal where space permitted. See Annex 9 for more information.

11. Additional remarks

11.1 CITES Provisions under Article IV, paragraphs 6 and 7: Introduction from the sea

Most target fisheries take place inside EEZs. There is a significant catch of *L. nasus* in some largely unrecorded and unmanaged pelagic high seas fisheries. A CITES Appendix II listing would require introductions from the sea to be accompanied by a non-detriment finding (NDF). They would have to be taken from a sustainably exploited high seas fishery, requiring management action by the appropriate RFMO. FAO (2010a) considered that regulation of international trade through listing in Appendix II could improve the control of high seas catches through the use of certificates of introduction from the sea accompanied by NDF.

11.2 Implementation issues

Lamna nasus was included in CITES Appendix III with effect from 25 September 2012. This listing will enable Parties to become familiar with trade patterns for *L. nasus* products and the issuance of CITES documentation in relation to such trade, before full implementation of this proposed Appendix II listing would come into effect 18 months after the adoption of the proposal, in September 2014.

11.2.1. *Scientific Authority*: It would be appropriate for a fisheries expert to advise the Scientific Authority.

11.2.2 *Identification of products in trade*: It will be important to develop and adopt species-specific commodity codes and identification guides for the meat and fins of this species. *L. nasus* meat, the product most commonly traded, is one of the highest priced shark meats in trade and often identified by name. There is a photographic guide to dried *L. nasus* pectoral and dorsal fins (Pew Environment Group 2012, Annex 8), and a dichotomous guide to the identification of the fins of 48 shark species (Deynat 2010). Several research groups have developed species-specific primers and highly efficient multiplex PCR (Polymerase Chain Reaction) screening assays to identify *L. nasus* body parts (e.g. Shivji et al. 2002; Pade et al. 2006). Furthermore, Testerman et al. (2007) have developed a simple and rapid PCR test

that can simultaneously identify *L. nasus* body parts and distinguish between Southern and Northern Hemisphere stocks, which may be used to easily confirm species identification and product origin for enforcement purposes. Cost per sample processed ranges from US\$12–60, depending upon sample condition, less for large numbers. Turn-around time is 2–7 days from receipt of sample, depending upon urgency.

- 11.2.3 *Non-detriment findings (NDF)*: CITES (2006) provides first considerations on preparing NDF for shark species. The Spanish Scientific Authority (García-Núñez 2008) reviewed the management measures and fishing restrictions established by international organisations related to the conservation and sustainable use of sharks, offering some guidelines and a guide to useful resources, and adapted to elasmobranch species IUCN's NDF checklist (Rosser & Haywood 2002). Similarly, the Expert Workshop on Non-Detriment Findings report (Anon. 2008) points to the information considered essential for making NDF for sharks and other fish species, and proposes logical steps to be taken when facing this task.

Management for *L. nasus* would ideally be based upon stock assessments and scientific advice to allow stock rebuilding (where necessary) and ensure sustainable fisheries (e.g. through quotas or technical measures, including closed areas, size limits and the release of live bycatch). This is standard fisheries management practice – albeit currently not yet widely applied for this species. Other States wishing to export *L. nasus* products would also need to develop and implement sustainable fisheries management plans if NDFs are to be declared, and would need to ensure that all States fishing the same stocks implement and enforce equally precautionary conservation and management measures.

12. References (see Annex 7)

List of Annexes to the proposal to list *Lamna nasus* in Appendix II

Annex 1. Figures and Tables

Annex 2. Scientific synonyms of *Lamna nasus*

Annex 3. Range States and Areas where *Lamna nasus* has been recorded

Annex 4. Historical fisheries development (extracts from CoP15 Prop-17)

Annex 5. Application of the criteria for amendment of Appendices I and II for commercially exploited aquatic species, with regard to Porbeagle shark *Lamna nasus*

Annex 6. National management measures for porbeagle *Lamna nasus*

Annex 7. References

Annex 8. Fin identification guide

Annex 9. Consultations with range States

Figures and Tables

Table 1.	Indices of percentage decline illustrated in Figure 2	p. 6
Table 2.	<i>Lamna nasus</i> life history parameters	p.18
Table 3.	Summary of population and catch trend data	p.19
Table 4.	EU Commodity codes related to trade in <i>Lamna nasus</i>	p. 20
Table 5.	EU imports of porbeagle <i>Lamna nasus</i> products, products (fresh and frozen) by source countries/territories, value and weight, 2010 and 2011	p. 20
Table 6.	EU exports of <i>Lamna nasus</i> products (fresh and frozen) by destination, value and weight, 2010-2011	p. 21
Figure 1.	Porbeagle <i>Lamna nasus</i>	p. 2
Figure 2.	Decline trends for porbeagle <i>Lamna nasus</i> stocks	p. 6
Figure 3.	Global <i>Lamna nasus</i> distribution and overlap with RFMOs	p. 21
Figure 4.	FAO fishing areas	p. 22
Figure 5.	Global reported capture production (tonnes) of <i>Lamna nasus</i> , 1950–2010	p. 23
Figure 6.	Reported Northeast Atlantic capture production (tonnes) of <i>Lamna nasus</i> by major fishing States, 1950–2010	p. 23
Figure 7.	Landings (tonnes) of <i>Lamna nasus</i> from ICES Areas (Northeast Atlantic), 1973–2005	p. 24
Figure 8.	Landings (tonnes) of <i>Lamna nasus</i> by Norway in the Northeast Atlantic, 1926–2009	p. 24
Figure 9.	Landings (tonnes) of <i>Lamna nasus</i> by Denmark in the Northeast Atlantic, 1954–2010 ..	p. 25
Figure 10.	Landings (tonnes) of <i>Lamna nasus</i> by Faroe Islands in the North Atlantic, 1973–2010 ..	p. 25
Figure 11.	French landings (tonnes) of <i>Lamna nasus</i> in the Northeast Atlantic, 1978–2005	p. 26
Figure 12.	Atlantic Ocean catches of porbeagle shark reported to ICCAT by Spain and Japan	p. 26
Figure 13.	Surplus production age-structured model for northeast Atlantic porbeagle shark	p. 27
Figure 14.	Depletion in total biomass and numbers for Northeast Atlantic porbeagle shark	p. 27
Figure 15.	<i>Lamna nasus</i> landings in the Northwest Atlantic, 1961–2008	p. 28
Figure 16.	Estimated trends in numbers of mature females, age-1 recruits, and total number of <i>Lamna nasus</i> in Canadian waters, 1960–2010, from four population models	p. 28
Figure 17.	Projections for recovery of the Canadian porbeagle stock. a) Population Viability Analyses; b) Bayesian Surplus Production models	p. 29
Figure 18.	Catch of porbeagle sharks in New Zealand waters and domestic longline fishing effort ..	p. 30
Figure 19.	Unstandardised CPUE indices for the New Zealand tuna longline fishery based on observer reports	p. 30
Figure 20.	Relative spawning stock biomass trend for a catch free age structured production model for southwest Atlantic porbeagle shark.....	p. 31
Figure 21.	Southern hemisphere landings of porbeagle <i>Lamna nasus</i> , 1990–2010	p. 31

Table 2. *Lamna nasus* life history parameters

Age at 50% maturity (years)	female	13 years (North Atlantic); 15–18 years (SW Pacific)	Campana <i>et al.</i> 2008; DFO 2005; Francis <i>et al.</i> 2007; Jensen <i>et al.</i> 2002; Natanson <i>et al.</i> 2002
	male	8 years (North Atlantic); 8–11 years (SW Pacific)	Campana <i>et al.</i> 2008; DFO 2005; Francis <i>et al.</i> 2007; Jensen <i>et al.</i> 2002; Natanson <i>et al.</i> 2002
Size at 50% maturity (total length (TL) in cm)	female	195 cm TL (SW Pacific), 230–260 cm TL (North Atlantic)	Campana <i>et al.</i> 2008; Dulvy <i>et al.</i> 2008; Francis <i>et al.</i> 2007, 2008; Francis & Duffy 2005
	male	165 cm TL (SW Pacific), 180–215 cm TL (North Atlantic)	Campana <i>et al.</i> 2008; Dulvy <i>et al.</i> 2008; Francis <i>et al.</i> 2007, 2008; Francis & Duffy 2005
Maximum size (fluke length (FL) and total length (TL) in cm)	female	302 cm FL, 357 cm TL (N Atlantic); 208 cm FL (SW Pacific)	Francis <i>et al.</i> 2008; DFO 2005; Dulvy <i>et al.</i> 2008
	male	253 cm FL, 295 cm TL (N Atlantic); 204 cm FL (SW Pacific)	Francis <i>et al.</i> 2008; DFO 2005; Dulvy <i>et al.</i> 2008
Longevity (years)	>25–46 years (Northwest Atlantic); ~65 years (Southwest Pacific)		Campana <i>et al.</i> 2002, 2008, 2010b; DFO 2005; Francis <i>et al.</i> 2007, 2008; Natanson <i>et al.</i> 2002
Size at birth (cm)	58–77 cm FL		Francis <i>et al.</i> 2007, 2008; Dulvy <i>et al.</i> 2008
Average reproductive age/generation time	18 years (Northwest Atlantic); 26 years (Southwest Pacific)		Campana <i>et al.</i> 2008; DFO 2005; Dulvy <i>et al.</i> 2008; Francis <i>et al.</i> 2007, 2008
Gestation time	8–9 months		Francis & Stevens 2000; Jensen <i>et al.</i> 2002
Reproductive periodicity	Annual		Jensen <i>et al.</i> 2002
Average litter size	Four pups		Jensen <i>et al.</i> 2002
Annual rate of population increase	5–7% (unfished, North Atlantic); 2.6% (from MSY, southwestern Pacific)		Campana <i>et al.</i> 2008; Smith <i>et al.</i> 2008
Natural mortality	0.10 (immatures), 0.15 (mature males), 0.20 (mature F) (Northwest Atlantic); 0.05–0.1 (Southwest Pacific)		Campana <i>et al.</i> 2001; Francis (unpublished data cited in HMS WG 2011)

Table 3. Summary of population and catch trend data

Year	Location	Data used	Trend	Source
1926–2008	NE Atlantic	Stock assessment	94% decline in biomass, 93% decline in numbers from historic baseline	Surplus production age-structured model ICCAT SCRS/ICES 2009 (Figure 13)
1933/37–2004/08	NE Atlantic	All Northeast Atlantic landings	87% decline in 5 yr average landings from historic baseline	ICCAT SCRS/ICES (2009); FAO (2010a) (Figure 6)
1936–2007	NE Atlantic	Norwegian landings	>99 % decline from historic baseline. Trend is the same if 5-year averages are used.	Norwegian and ICES data (Figure 8); ICCAT SCRS/ICES (2009); FAO (2010a)
1950/54–2004/08	NE Atlantic	Danish fishery	99% decline from historic baseline	ICES data (Figure 9); ICCAT SCRS/ICES (2009); FAO (2010a)
1986–2007	NE Atlantic	Spanish longline bycatch CPUE	No trend in recent catch rates	ICES WGEF (2011).
1972–2007	NE Atlantic	French target longline CPUE	Approximately one third decline in two most recent generations	ICES WGEF (2011); Biais and Vollette (2009) (Figure 13)
Various, 1800–2006	Mediterranean	Records of <i>Lamna nasus</i>	Virtual disappearance from landings and research survey records	Stevens <i>et al.</i> 2005 and sources cited in section 4.1.1.
1950–2006	Ligurian Sea, Mediterranean	Abundance &/or biomass of lamnids	>99% decline in tuna traps	Ferretti <i>et al.</i> 2008
1978–1999	Ionian Sea, Mediterranean	Standardised CPUE of lamnids	>98% decline in tuna traps	Ferretti <i>et al.</i> 2008
1961–2005	NW Atlantic	Stock assessment (age structured model)	84–88% decline in number of mature females from historic baseline	Campana & Gibson 2008, ICCAT SCRS/ICES 2009, Campana <i>et al.</i> 2010b (Figure 16)
1961–2005	NW Atlantic	Stock assessment (age structured model)	73–78% decline in total numbers from historic baseline	Campana & Gibson 2008, ICCAT SCRS/ICES 2009, Campana <i>et al.</i> 2010b (Figure 16)
1961–2005	NW Atlantic	Stock assessment (surplus production model)	68% decline in stock biomass from historic baseline	Campana & Gibson 2008, ICCAT SCRS/ICES 2009, Campana <i>et al.</i> 2010b
1961–2004	NW Atlantic	Bayesian surplus production model	97% decline in stock biomass from historic baseline	Babcock & Cortes 2010
1963–1970	NW Atlantic	Norwegian & Faroese landings	~90% decline in catch and collapse of fishery	Landings data (Figures 10 and 15)
1961–2008	NW Atlantic	5 year average of all catches	~96% decline	Landings data (Figure 15)
1994–2003	North Atlantic	Catches	Decline, 1000 to near zero/year	Matsunaga and Nakano 2005
1993–2003	North Atlantic	CPUE	Decline with slope -0.6	Matsunaga and Nakano 2002
1961–2008	SW Atlantic	Stock assessment (catch free, age structured production model)	82% decline in spawning stock biomass (SSB) from historic baseline	ICCAT SCRS/ICES 2009 (Figure 20)
1992–2002	SW Pacific (New Zealand)	Longline CPUE	70% decline in about 10 years, most during 5 year period of highest effort	NZ MFSC 2011 (Figures 18 and 19)
1998–2005	SW Pacific (New Zealand)	Weight landed	75% decline in about 10 years	NZ MFSC 2011 (Figure 18)

A 'marked historical extent of decline' is a percentage decline to 5%–30% of the baseline, depending upon the productivity of the species [30% for porbeagle]. A 'marked recent rate of decline' is a percentage decline of 50% per cent or more within the last 10 years or three generations, whichever is the longer

Table 4. EU Commodity codes related to trade in *Lamna nasus*

Customs code	Commodity	Validity
FRESH		
0302.6590	Fresh or chilled sharks (excl. dogfish of the species " <i>Squalus acanthias</i> " and " <i>Scyliorhinus</i> spp.")	01/01/1988 – 31/12/2009
0302.6560	Fresh or chilled porbeagle shark " <i>Lamna nasus</i> "	01/01/2010 – 31/12/2011
0302.8130	Fresh or chilled porbeagle shark " <i>Lamna nasus</i> "	01/01/2012 –
0302.6595	Fresh or chilled sharks (excl. dogfish of the species " <i>Squalus acanthias</i> ", " <i>Scyliorhinus</i> spp. and <i>Lamna nasus</i> ")	From 2010
FROZEN		
0303.7590	Frozen sharks (excl. dogfish)	01/01/1988 – 31/12/2009
0303.7560	Frozen porbeagle shark " <i>Lamna nasus</i> "	01/01/2010 – 31/12/2011
0303.8130	Frozen porbeagle shark " <i>Lamna nasus</i> "	01/01/2012 –
0303.7595	Frozen sharks (excl. dogfish of the species " <i>Squalus acanthias</i> ", " <i>Scyliorhinus</i> spp." or " <i>Lamna nasus</i> ")	From 2010
FROZEN FILLETS		
0304.2069	Frozen fillets of sharks (excl. dogfish)	01/01/1988 – 31/12/2006
0304.2969	Frozen fillets of sharks (excl. dogfish)	01/01/2007 – 31/12/2009
0304.2965	Frozen fillets of porbeagle shark " <i>Lamna nasus</i> "	01/01/2010 – 31/12/2011
0304.8955	Frozen fillets of porbeagle shark " <i>Lamna nasus</i> "	01/01/2012 –
0304.2968	Frozen fillets of sharks (excl. dogfish of the species " <i>Squalus acanthias</i> ", " <i>Scyliorhinus</i> " spp. or " <i>Lamna nasus</i> ")	From 2010

Table 5. EU imports of porbeagle *Lamna nasus* products, products (fresh and frozen) by source countries/territories, value and weight, 2010 and 2011.

(Source EUROSTAT, downloaded April 2012)

EUR

Source	2010	2011	Total
SOUTH AFRICA	0	35,221	35,221
NORWAY	15,893	11,187	27,080
MOROCCO	21,613	727	22,340
FAROE ISLANDS	15,995	0	15,995
JAPAN	0	13,878	13,878
NEW ZEALAND		5,397	5,397
SENEGAL	4,486	0	4,486
SURINAME	4,028	0	4,028
Total	62,015	66,410	128,425

kg

Source	2010	2011	Total
SOUTH AFRICA	0	12,600	12,600
JAPAN	0	11,600	11,600
NORWAY	5,000	3,100	8,100
MOROCCO	7,300	500	7,800
FAROE ISLANDS	4,400	0	4,400
SURINAME	2,500	0	2,500
NEW ZEALAND		2,200	2,200
SENEGAL	1,300	0	1,300
Total	20,500	30,000	50,500

EUR/kg

Source	2010	2011	Average
FAROE ISLANDS	3.64		3.64
SENEGAL	3.45		3.45
NORWAY	3.18	3.54	3.36
SOUTH AFRICA		2.80	2.80
NEW ZEALAND		2.45	2.45
MOROCCO	2.96	1.12	2.04
SURINAME	1.61		1.61
JAPAN		1.26	1.26
Average	2.97	2.18	2.57

Table 6. EU exports of *Lamna nasus* products (fresh and frozen) by destination, value and weight, 2010-2011. (Source EUROSTAT, downloaded April 2012)

EUR

Destination	2010	2011	Total
MOROCCO	47,068	0	47,068
AFGHANISTAN	0	8,208	8,208
CHINA	0	3,562	3,562
ANDORRA	0	2,776	2,776
CEUTA	0	2,460	2,460
SWITZERLAND	602	0	602
TURKEY	0	410	410
Total	47,670	66,330	114,000

kg

Destination	2010	2011	Total
MOROCCO	68,000	69,000	137,000
AFGHANISTAN	0	2,300	2,300
ANDORRA	0	800	800
CEUTA	0	600	600
CHINA	0	200	200
SWITZERLAND	200	0	200
TURKEY	0	200	200
Total	68,200	73,100	141,300

EUR/kg

Destination	2010	2011	Average
CHINA		17.81	17.81
CEUTA		4.10	4.10
ANDORRA		4.05	4.05
AFGHANISTAN		3.63	3.63
SWITZERLAND	3.01		3.01
TURKEY		2.05	2.05
MOROCCO	0.69	0.70	0.70
Average	1.85	5.39	

NOTES ON TABLES:

High value Chinese exports likely include fins.

Exports can exceed imports when stockpiles are being utilised.

Landings by non-EU vessels from non-EU waters may not appear as imports.

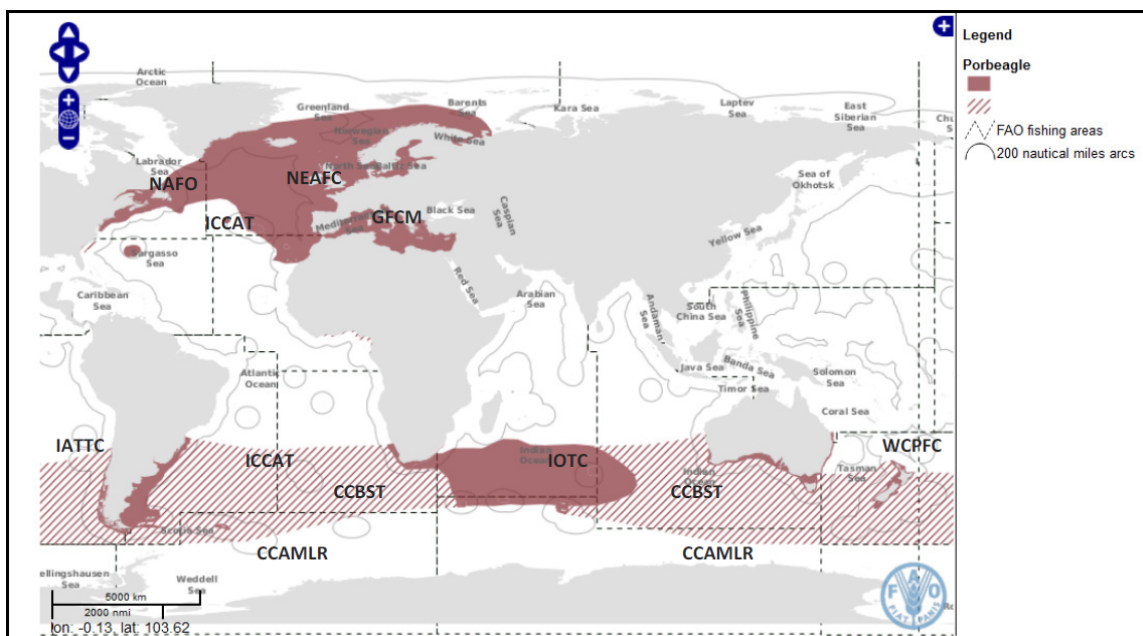


Figure 3. *Lamna nasus* distribution and overlap with Regional Fisheries Management Organisations (Source: FAO FIGIS, including <http://www.fao.org/fishery/species/2798/en> 2012)

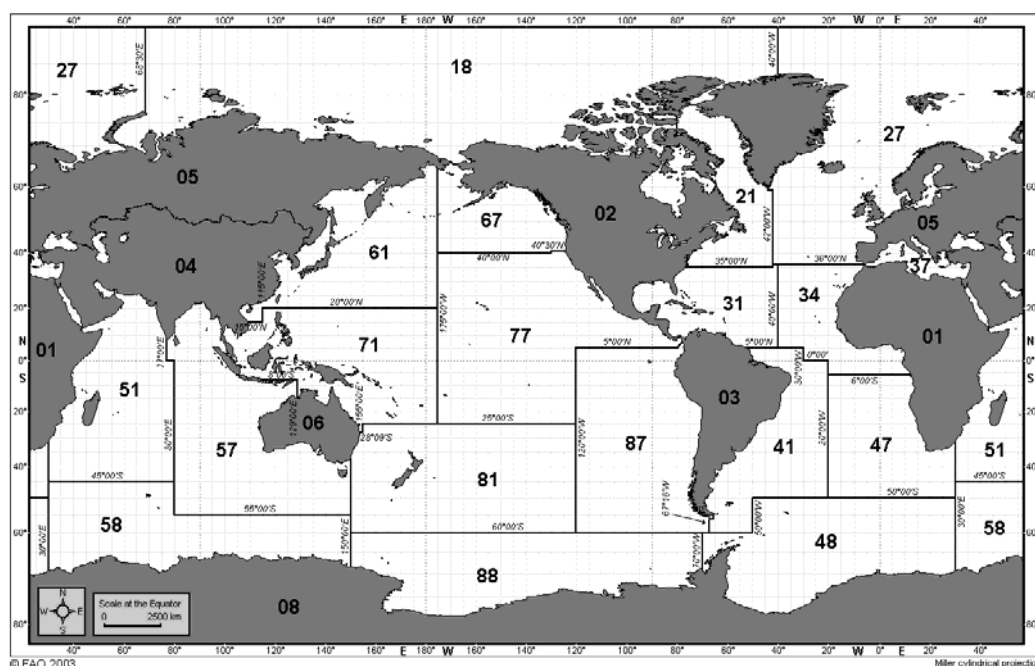


Figure 4. FAO fishing areas.

Key: *Lamna nasus* is reported from the fishing areas underlined below.

01 - Africa-Inland Water	<u>31 - Atlantic, Western Central</u>	<u>58 - Indian Ocean, Antarctic</u>
02 - America-Inland Water	<u>34 - Atlantic, Eastern Central</u>	61 - Pacific, Northwest
03 - America, South-Inland Water	<u>37 - Mediterranean & Black seas</u>	67 - Pacific, Northeast
04 - Asia-Inland Water	<u>41 - Atlantic, Southwest</u>	71 - Pacific, Western Central
05 - Europe-Inland Water	<u>47 - Atlantic, Southeast</u>	77 - Pacific, Eastern Central
06 - Oceania-Inland Water	<u>48 - Atlantic, Antarctic</u>	<u>81 - Pacific, Southwest</u>
<u>21 - Atlantic, Northwest</u>	<u>51 - Indian Ocean, Western</u>	<u>87 - Pacific, Southeast</u>
<u>27 - Atlantic, Northeast</u>	<u>57 - Indian Ocean, Eastern</u>	88 - Pacific, Antarctic

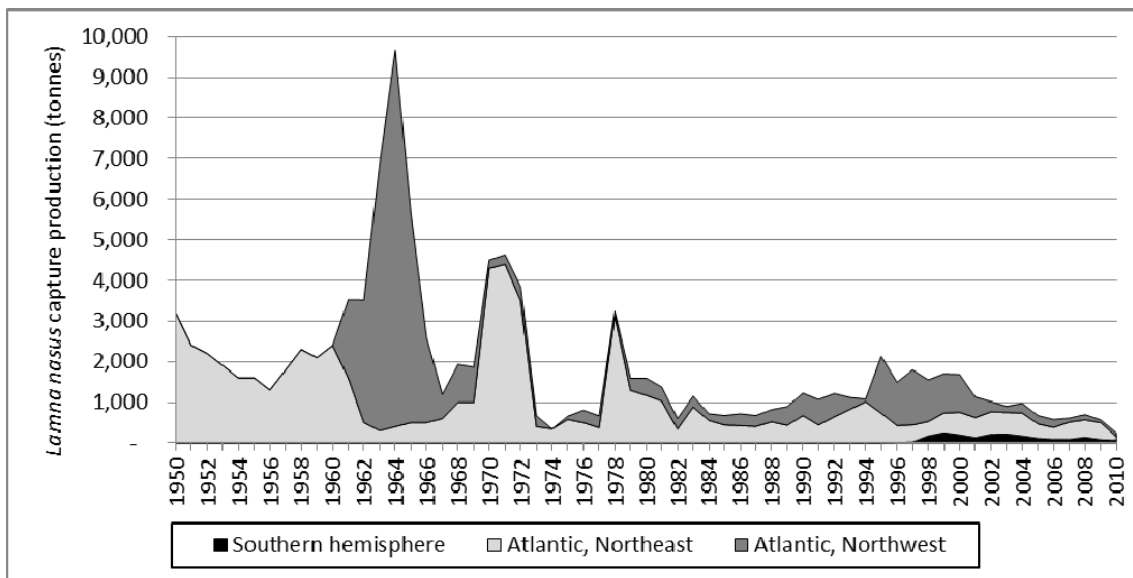


Figure 5. Global reported capture production (tonnes) of *Lamna nasus*, 1950–2010. (Source: FAO FISHSTAT 2012)

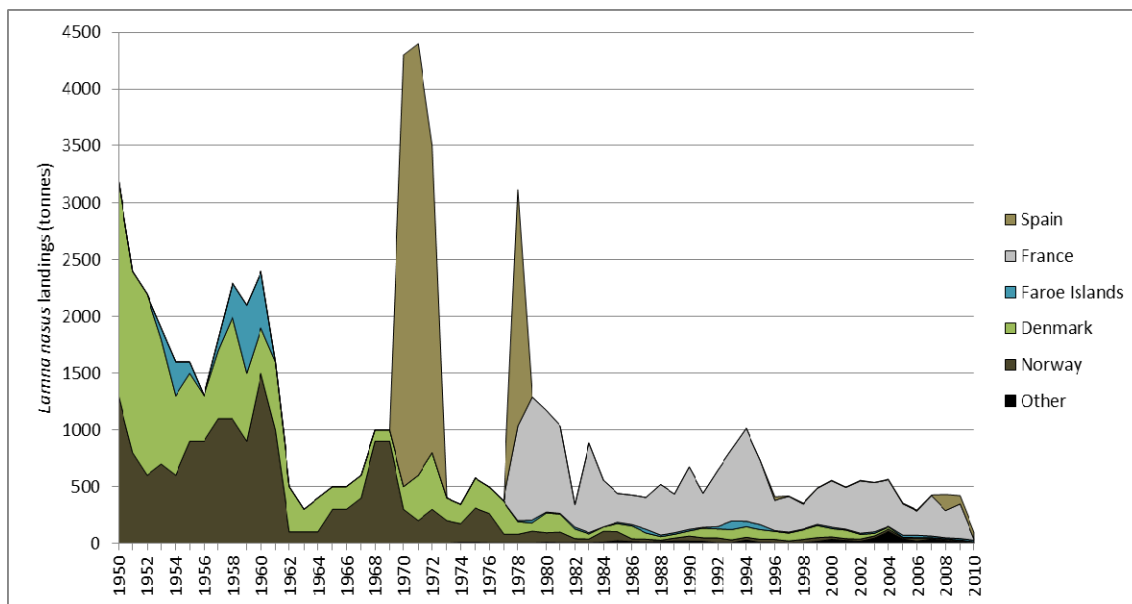


Figure 6. Reported Northeast Atlantic capture production (tonnes) of *Lamna nasus* by major fishing States, 1950–2010. (Source: FAO FISHSTAT 2012)

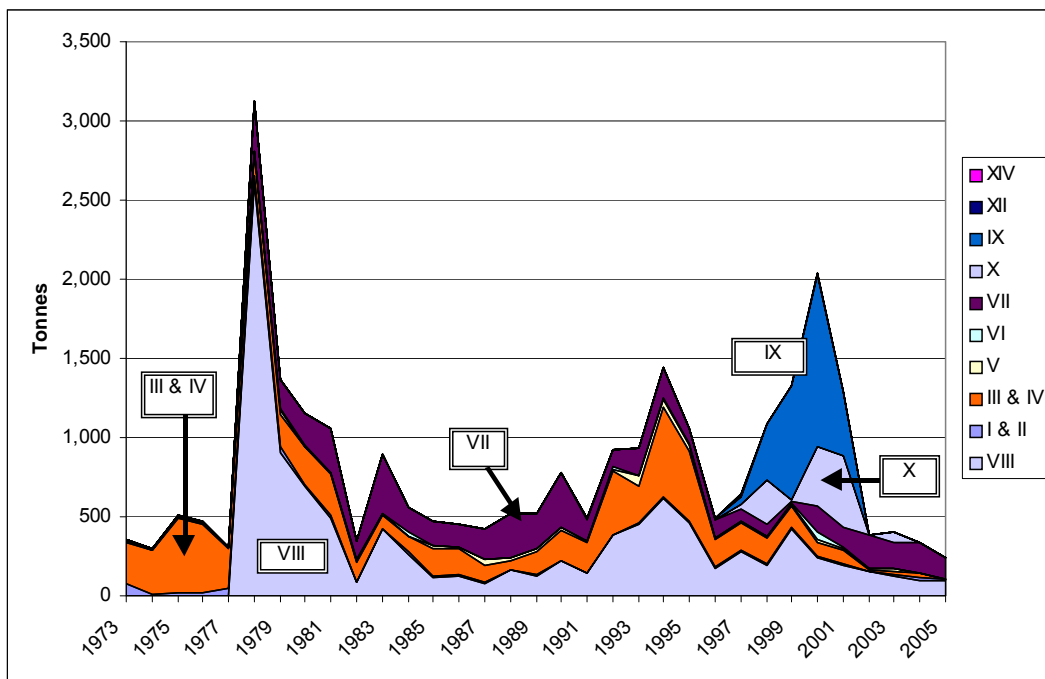


Figure 7. Landings (tonnes) of *Lamna nasus* from ICES Areas (Northeast Atlantic), 1973–2005. (Source: ICES Working Group on Elasmobranch Fishes)

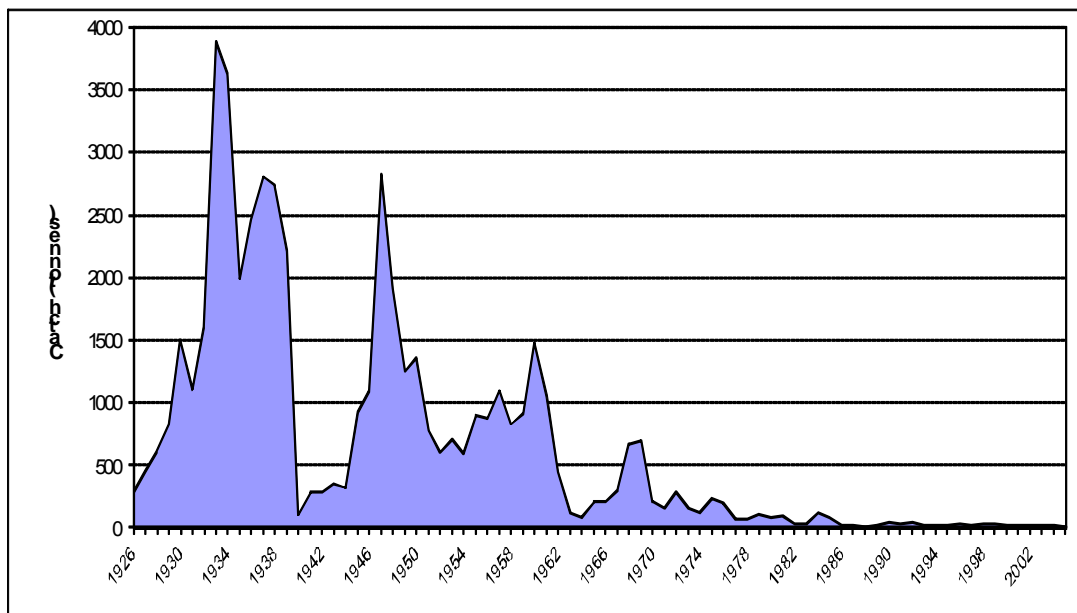


Figure 8. Landings (tonnes) of *Lamna nasus* by Norway in the Northeast Atlantic, 1926–2009. (Source: Norwegian fisheries data & ICES WGEF.) (Norway prohibited target porbeagle fisheries in 2007. Bycatch since then has been 10–20t/yr.)

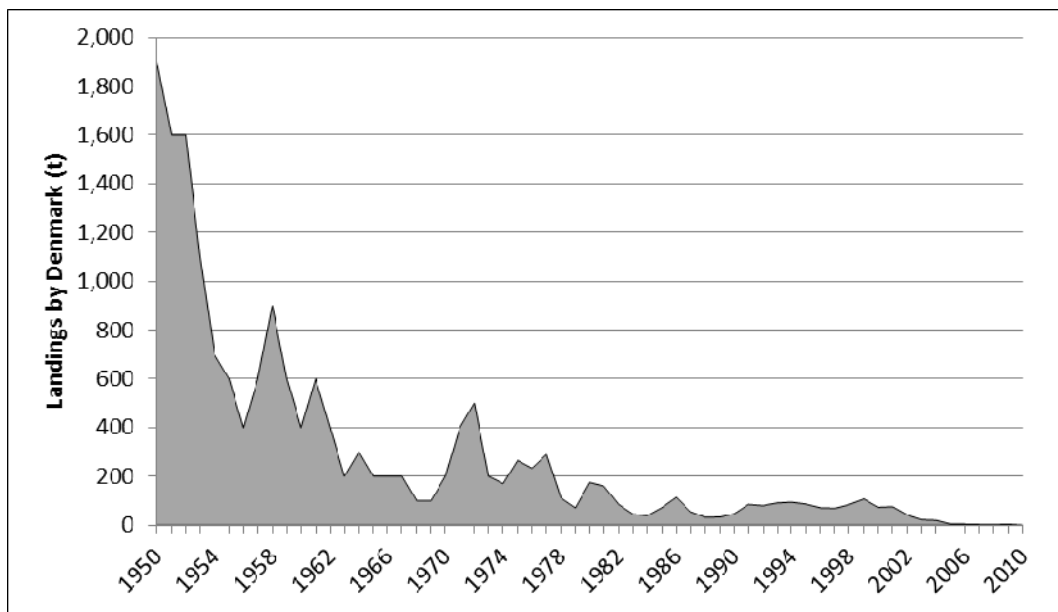


Figure 9. Landings (tonnes) of *Lamna nasus* by Denmark in the Northeast Atlantic, 1954–2010. (Source: FAO FISHSTAT 2012)

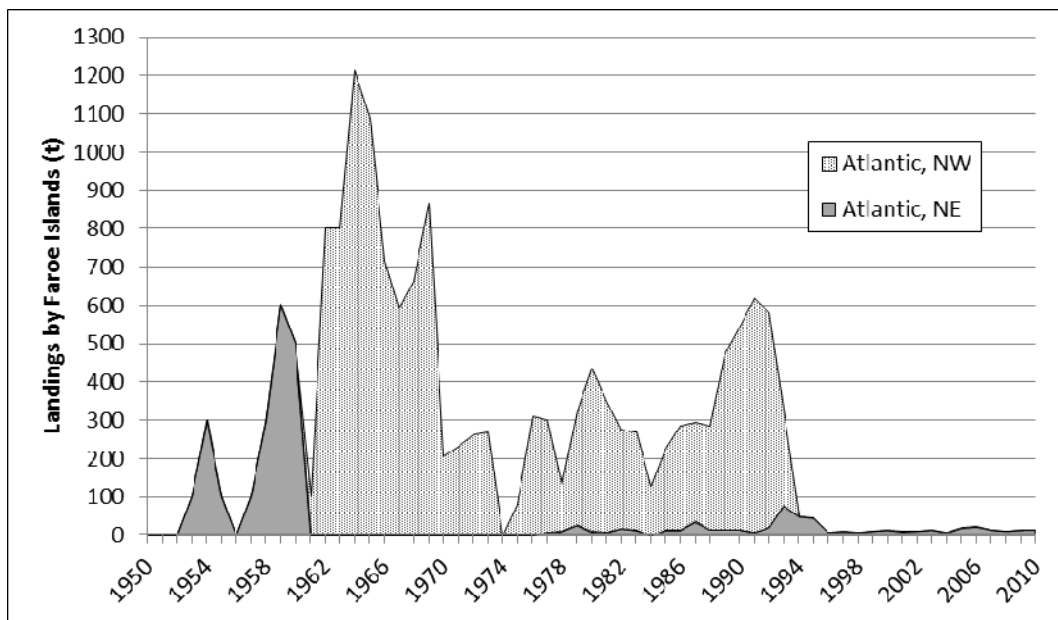


Figure 10. Landings (tonnes) of *Lamna nasus* by Faroe Islands in the North Atlantic, 1973–2010. (Source: FAO FISHSTAT 2012.)

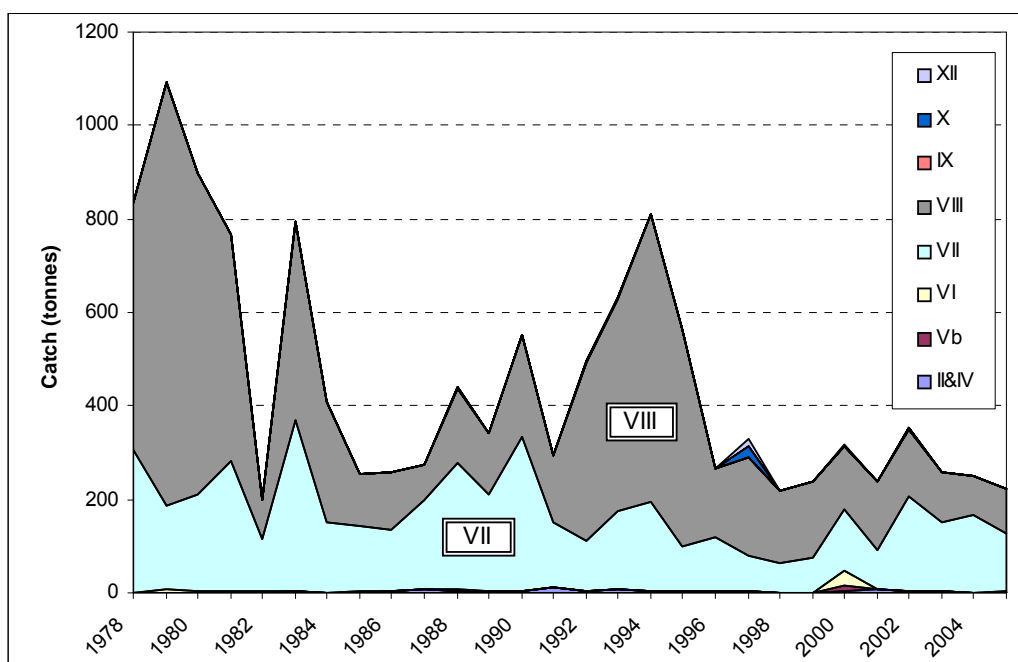


Figure 11. French landings (tonnes) of *Lamna nasus* in the Northeast Atlantic, 1978–2005. (Source: ICES Working Group on Elasmobranch Fishes)

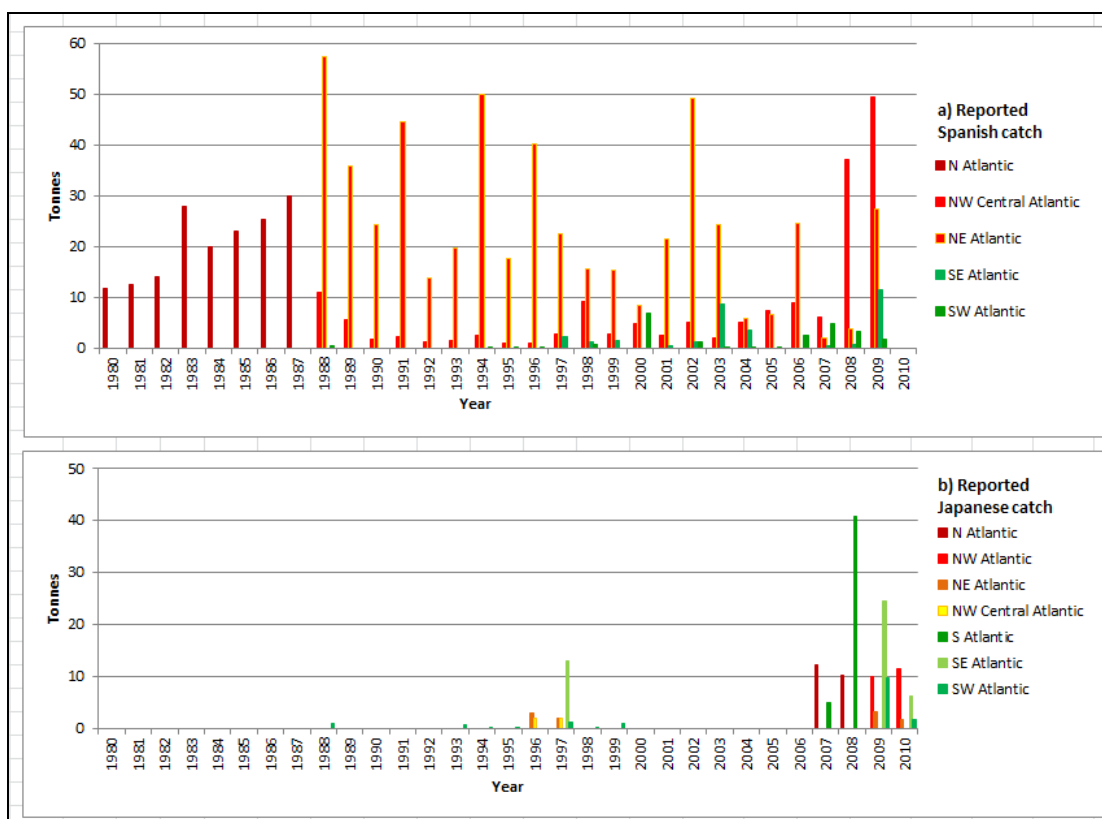


Figure 12. Atlantic Ocean catches of porbeagle shark reported to ICCAT by a) Spain and b) Japan. (Source ICCAT database, downloaded February 2012)

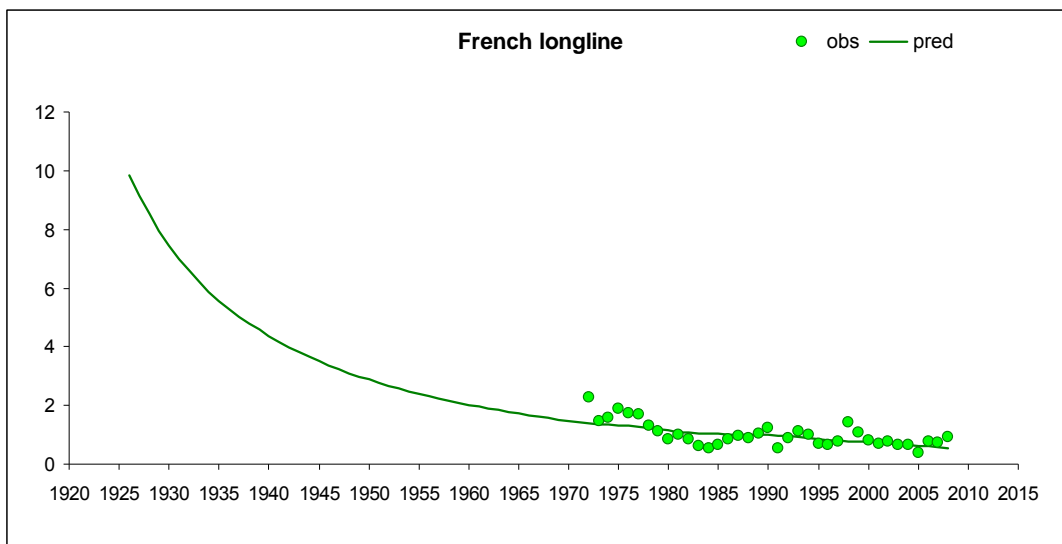


Figure 13. Surplus production age-structured model fits to French longline CPUE indices (assuming virgin conditions in 1926) for northeast Atlantic porbeagle shark. (Source ICCAT SCRS/ICES 2009).

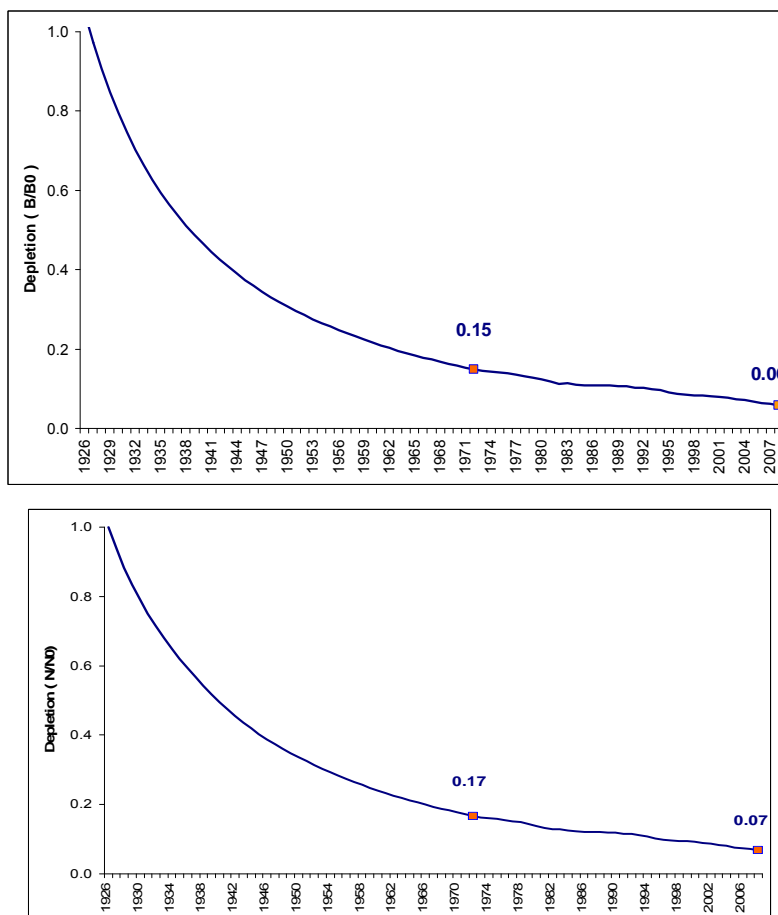


Figure 14. Depletion in total biomass (upper panel) and numbers (lower panel) for a surplus production age-structured model for Northeast Atlantic porbeagle shark. The dots indicated on the line correspond to depletion at the beginning of the modern period (1972) and current depletion (2008). (Source ICCAT SCRS/ICES 2009).

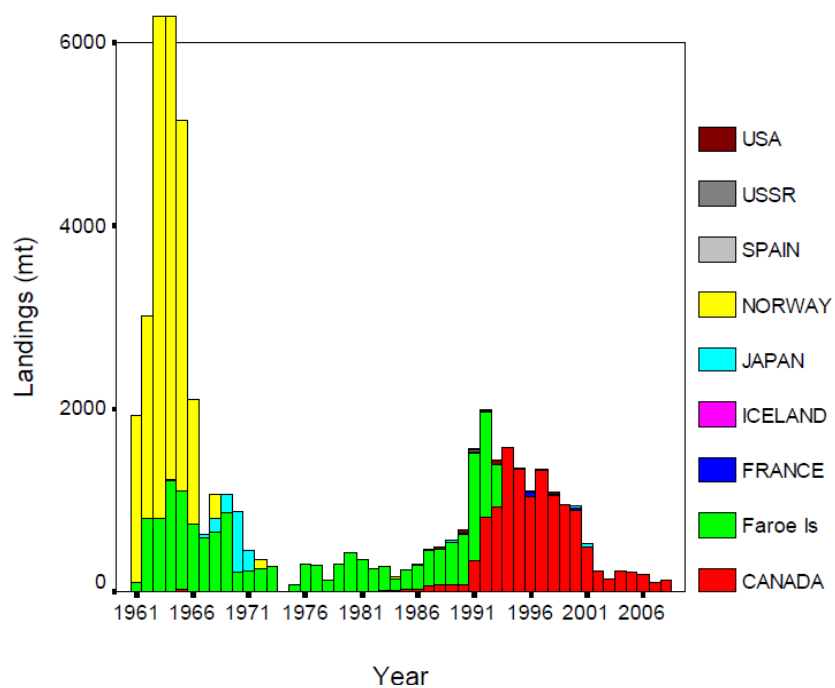


Figure 15. *Lamna nasus* landings in the Northwest Atlantic, 1961–2008 (excluding unreported high seas captures). (Source: Campana *et al.* 2010)

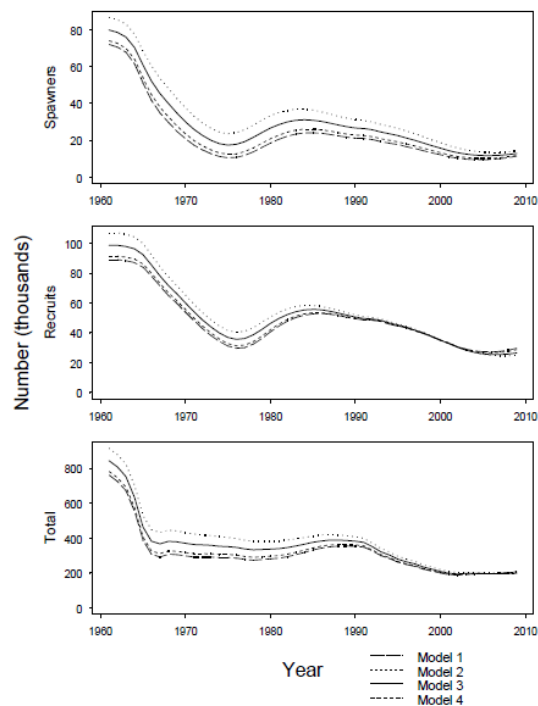
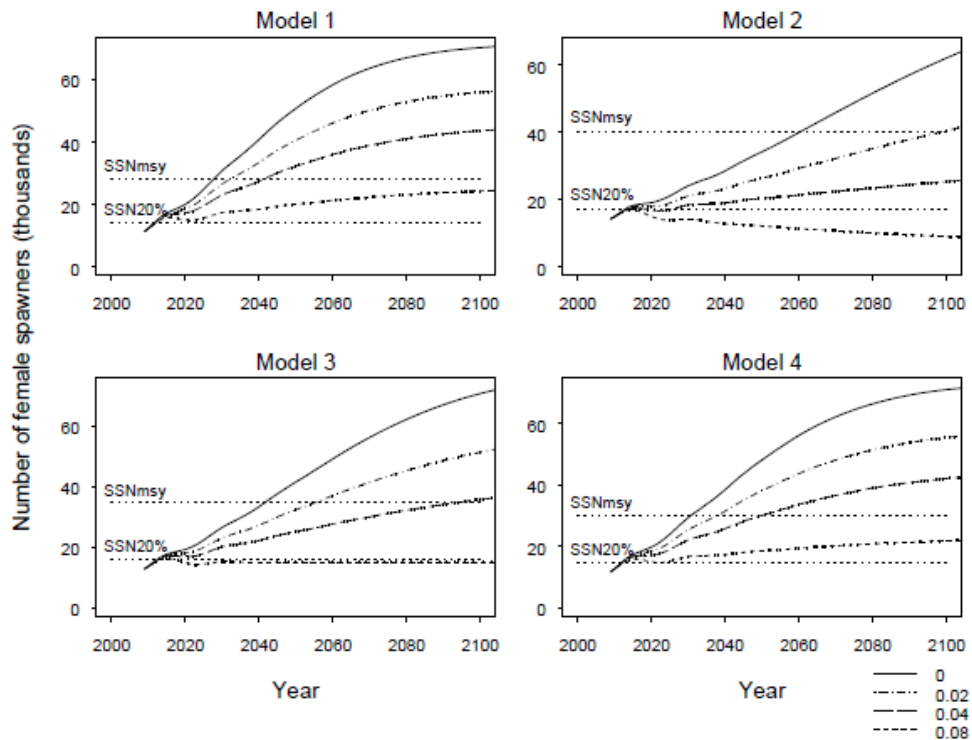


Figure 16. Estimated trends in numbers of mature females (top), age-1 recruits (centre) and total number of *Lamna nasus* in Canadian waters, 1960–2010, from four porbeagle population models (all show similar trajectories). (Source: Campana *et al.* 2010.)

17 a)



17 b)

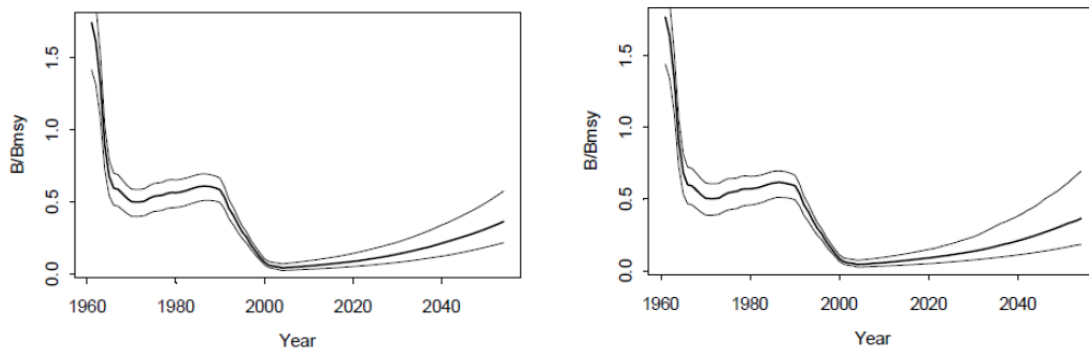


Figure 17. Projections for recovery of the Canadian porbeagle stock.

- a) Comparison of recovery targets and trajectories for the Canadian porbeagle stock during 2009–2100, obtained using Population Viability Analysis from four population models projected deterministically under four different exploitation rates (0% to 8% *per annum*). (Source: Campana *et al.* 2010.)
- b) Two Bayesian Surplus Production model results for depletion and future recovery trajectories for the Canadian porbeagle stock, 1961–2050s, showing median and 80% credibility intervals for biomass relative to BMSY with no fishing after 2004. (Source: Babcock and Cortes 2010)

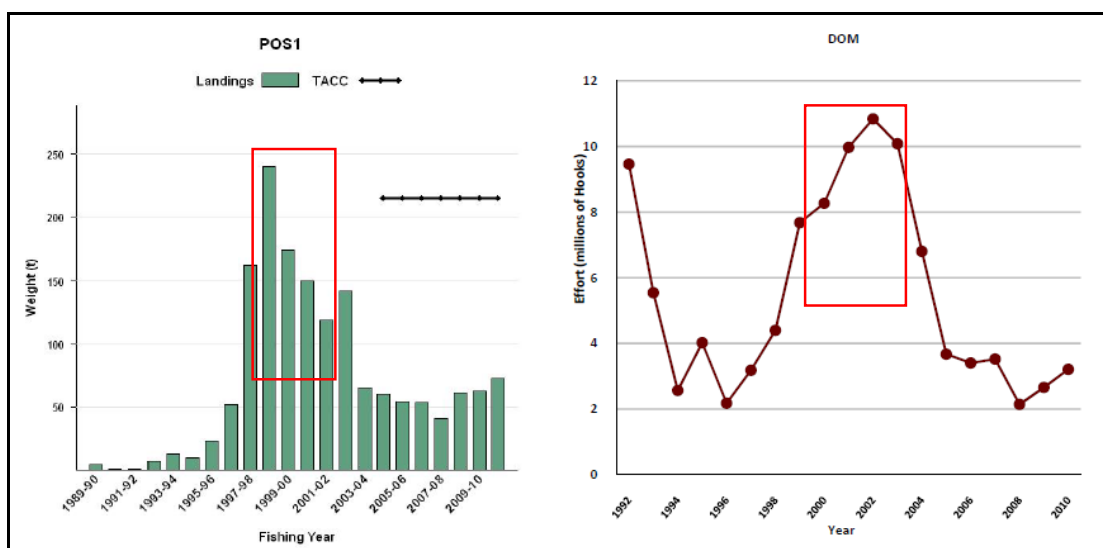


Figure 18. Catch of porbeagle sharks from 1989-90 to 2010-11 within New Zealand waters (POS1, left), and fishing effort (number of hooks set) for all domestic (including effort by foreign vessels chartered by NZ fishing companies) New Zealand flagged surface longline vessels 1992 to 2010 (DOM, right). (Source: MFSC 2011: New Zealand Highly Migratory Species Stock Assessment Working Group Report 2011-12.)

Substantial foreign landings up to about 1992-93 have not been quantified and are not included. The four boxed years (1999 to 2002) highlight the period when increasing domestic longline fishing effort (right) coincided with decreasing catches (left).

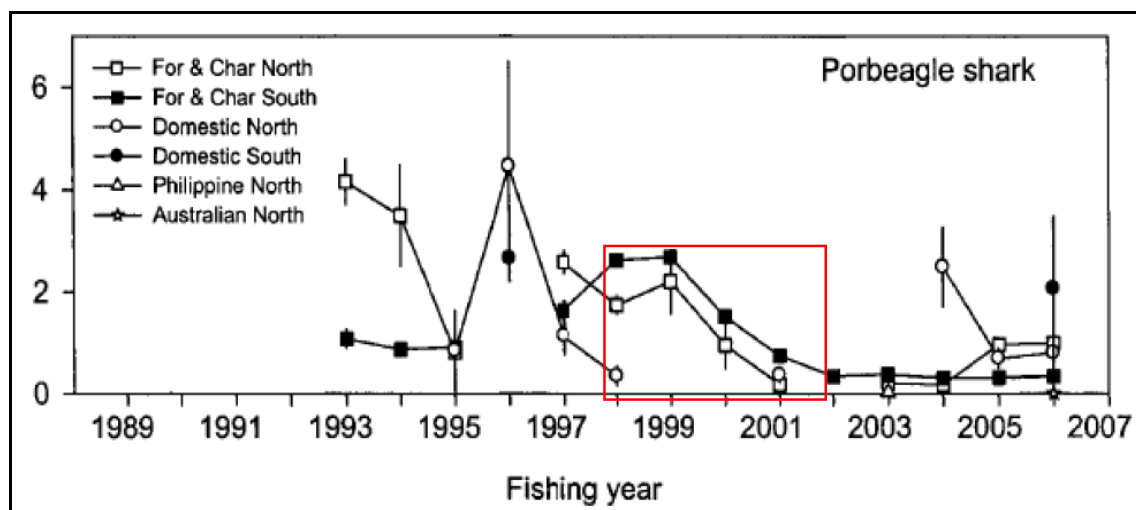


Figure 19. Unstandardised CPUE indices (number of *Lamna nasus* per 1000 hooks) for the New Zealand tuna longline fishery based on observer reports.

Years are fishing years (1993 = October 1992 to September 1993). Confidence intervals are from bootstrapped data. -■- foreign and charter fleet, southern New Zealand; -□- foreign and charter fleet, northern New Zealand; -●- domestic fleet, southern New Zealand; -○- domestic fleet, northern New Zealand. (Taken from Ministry of Fisheries (2011). Source: Griggs *et al.* 2008.)

The four boxed years (1999 to 2002) highlight the period when increasing domestic longline fishing effort coincided with decreasing catches

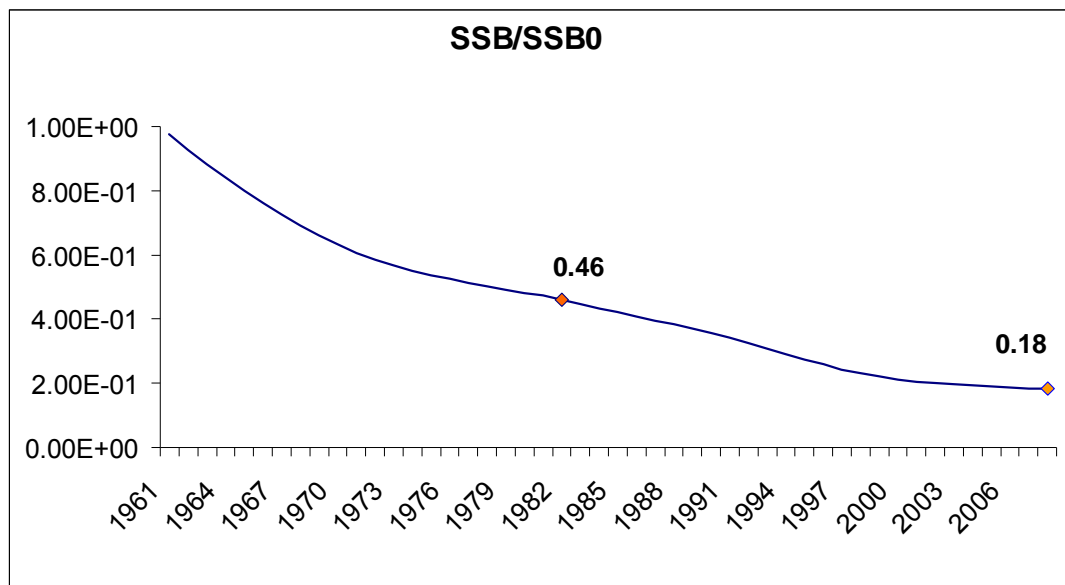


Figure 20. Relative spawning stock biomass (SSB) trend for a catch free age structured production model, assuming virgin conditions in 1961, for southwest Atlantic porbeagle shark. The dots indicated on the line correspond to depletion at the beginning of the modern period (1982) and current depletion (2008). (Source ICCAT SCRS/ICES (2009)).

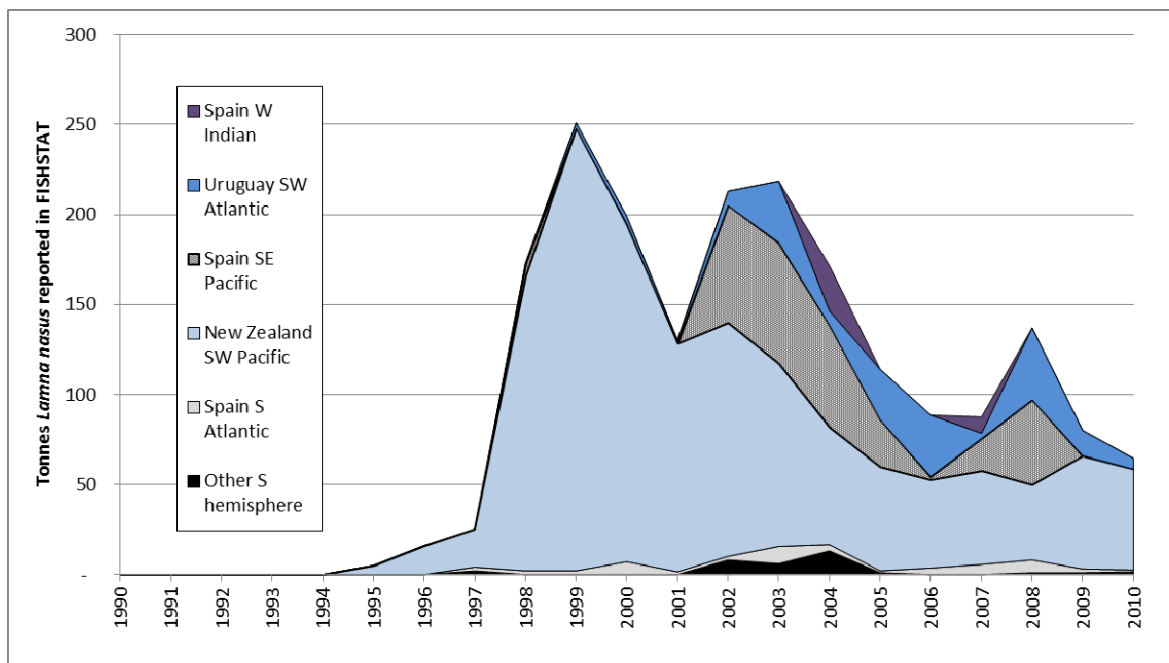


Figure 21. Southern hemisphere landings of porbeagle *Lamna nasus*, 1990–2010 (Source FAO FISHSTAT).

Scientific synonyms of *Lamna nasus*
(Source: FAO Species Identification Sheet 2003)

- *Squalus glaucus* Gunnerus, 1768 (not *S. glaucus* Linnaeus, 1758 = *Prionace glauca*);
- *Squalus cornubicus* Gmelin, 1789;
- *Squalus pennanti* Walbaum, 1792 (also *Lamna pennanti*, Desvaux, 1851);
- *Squalus monensis* Shaw, 1804;
- *Squalus cornubiensis* Pennant, 1812;
- *Squalus selanonus* Walker, in Leach, 1818;
- *Selanonius walkeri* Fleming, 1828;
- *Lamna punctata* Storer, 1839;
- *Oxyrhina daekayi* Gill, 1862;
- *Lamna philippi* Perez Canto, 1886;
- *Lamna whitleyi* Philipps, 1935.

Range States and Areas where *Lamna nasus* has been recorded

(Source Compagno 2001)

Albania	*Falkland/Malvinas Islands	New Zealand
Algeria	Finland	Norway
Antarctica	France	Portugal
Argentina	France (Corse)	Russian Federation
Australia (New South Wales; Queensland; South Australia; Tasmania; Victoria; Western Australia)	French Polynesia	Slovenia
Azores Is. (Portugal)	Germany	South Africa
Belgium	Gibraltar	**Islas Georgias del Sur y Sandwich del Sur/South Georgia and the South Sandwich Islands
Bermuda	Greece (East Aegean Is.; Kriti)	Spain
Brazil	Greenland	Sweden
Canada (New Brunswick; Newfoundland; Nova Scotia; Prince Edward Island)	Iceland	Syria
Canary Islands	Ireland	Tunisia
Cape Verde	Isle of Man	Turkey
Channel Islands (UK)	Israel	United Kingdom (England, Wales, Scotland, Northern Ireland)
Chile	Italy (Sardinia; Sicilia)	United States of America (Maine; Massachusetts; New Jersey; New York; Rhode Island; South Carolinas?)
Croatia	Kerguelen Is.	Uruguay
Cyprus	Lebanon	Yugoslavia
Denmark	Libya	
Egypt	Madeira Islands (Portugal)	
Faeroe Islands	Malta	
	*Malvinas/Falkland Islands	
	Monaco	
	Morocco	
	Netherlands	

FAO Fisheries Areas:

21, 27, 31, 34, 37, 41, 47, 48, 51, 57, 58, 81 and 87 (see Figure 3).

Oceans:Northwest Atlantic: Greenland, Canada, United States, and Bermuda.Northeast Atlantic: Iceland and western Barents Sea to Baltic, North and Mediterranean Seas, including Russia, Norway, Sweden, Denmark, Germany, Holland, United Kingdom, Ireland, France, Portugal, Spain, and Gibraltar; Mediterranean (not Black Sea); Morocco, Madeira, and Azores.Southern Atlantic: southern Brazil and Uruguay to southern Argentina; Namibia and South Africa.Indo-West Pacific: South-central Indian Ocean from South Africa east to between Prince Edward and Crozet Islands, between Kerguelen and St. Paul Islands, and southern Australia, New Zealand. Sub Antarctic waters off South Georgia, Marion, Prince and Kerguelen Islands.Eastern South Pacific: southern Chile to Cape Horn.

* A dispute exists between the Governments of Argentina and the United Kingdom of Great Britain and Northern Ireland concerning sovereignty over the Falkland Islands/Islas Malvinas.

** A dispute exists between the Governments of Argentina and the United Kingdom of Great Britain and Northern Ireland concerning sovereignty over the South Georgia and the South Sandwich Islands/ Islas Georgia del Sur y Sandwich del Sur.

Historical Fisheries Trends

NOTE – REFERENCES TO FIGURES IN ANNEX 4 HAVE BEEN AMENDED TO REFER TO THE FIGURES IN THIS PROPOSAL.

Extracted from E15 prop-17	De F-15 prop-17	De S-15 prop-17
Northeast Atlantic	Atlantique Nord-Est	Atlántico nororiental
<p><i>Lamna nasus</i> has been fished by many European countries, principally Denmark, France, Norway, Faroes and Spain (Figures 6–11). Norway's target <i>L. nasus</i> longline fishery began in the 1920s and first peaked at 3,884t in 1933. About 6,000t were landed in 1947, when the fishery reopened after the Second World War, followed by a decline to between 1,200–1,900t from 1953–1960. The collapse of this fishery led to the redirection of fishing effort by Norwegian, Faroese and Danish longline shark fishing vessels into the Northwest Atlantic (see below). Norwegian landings from the Northeast Atlantic subsequently decreased to a mean for the past decade of 20t (Figure 8). Average Danish landings (Figure 9) fell from over 1500t in the early 1950s to a mean of ~50t. (DFO 2001a, Gauld 1989, ICES and Norwegian data.)</p>	<p><i>Lamna nasus</i> a été pêché dans cette région par de nombreux pays européens, principalement le Danemark, l'Espagne, les îles Féroé, la France et la Norvège (fig. 6 à 11). La Norvège a commencé ses pêches ciblées à la palangre de <i>L. nasus</i> dans les années 1920. Les débarquements ont atteint un premier point culminant (3884 t) en 1933. Environ 6000 t ont été débarquées en 1947, lorsque la pêche a repris après la seconde guerre mondiale, puis il y a eu une baisse progressive, à 1200 à 1900 t entre 1953 et 1960. Cet effondrement a conduit à la réorientation vers l'Atlantique Nord-Ouest de l'effort de pêche des palangriers norvégiens, féroïens et danois pêchant le requin (voir ci-dessous). Les débarquements norvégiens en provenance de l'Atlantique Nord-Est ont alors baissé de 20 t en moyenne ces 10 dernières années (fig. 8). Les débarquements danois moyens (fig. 9) sont passés de plus de 1500 t au début des années 1950 à une moyenne d'environ 50 t (DFO 2001a, Gauld 1989, CIEM et statistiques norvégiennes).</p>	<p><i>Lamna nasus</i> se pesca en muchos países europeos, principalmente Dinamarca, Francia, Noruega, Islas Feroe y España (Figuras 6 a 11). La pesca selectiva con palangre de <i>L. nasus</i> en Noruega empezó en el decenio de 1920, y alcanzó su primer máximo de 3.884 t en 1933. En 1947 se desembarcaron unas 6.000 t, al reanudarse la pesca después de la segunda guerra mundial, lo que fue seguido de una disminución de entre 1.200 y 1.900 t de 1953 a 1960. El hundimiento de esta pesquería indujo a reorientar el esfuerzo de pesca de las embarcaciones de pesca de tiburón con palangre noruegas, feroesas y danesas en el Atlántico noroccidental (véase <i>infra</i>). Los desembarcos noruegos del Atlántico noroccidental disminuyeron posteriormente a una media en el pasado decenio de 20 t (Figura 8). Los desembarcos daneses (Figura 9) disminuyeron por término medio de más de 1.500 t a comienzos del decenio de 1950 a una media de ~50 t. (DFO, 2001a; Gauld, 1989; CIEM, y datos noruegos.)</p>
<p>Reported landings from the historically most important fisheries, around the UK and in the North Sea and adjacent inshore waters (ICES areas III & IV) have decreased to very low levels during the past 30–40 years. Catches from offshore ICES sub-regions west of Portugal (IX), west of the Bay of Biscay (VIII) and around the Azores (X) have increased since 1989 (Figure 7). This is attributed to a decline in heavily fished and depleted inshore populations and redirection of effort to previously lightly exploited offshore areas.</p>	<p>Les débarquements notifiés lors des pêches passées les plus importantes autour du Royaume-Uni et dans la mer du Nord et les eaux côtières adjacentes (zones III & IV du CIEM) ont fortement diminué ces 30 à 40 dernières années et ont atteint des niveaux très faibles. Le nombre des captures dans les sous-régions de haute mer du CIEM ouest Portugal (IX), ouest golfe de Gascogne (VIII) et autour des Açores (X) a augmenté depuis 1989 (fig. 7). Cela s'explique par un déclin des populations des eaux côtières fortement pêchées et appauvries, ainsi que par une réorientation de l'effort de pêche vers des zones de haute mer qui n'étaient auparavant que peu exploitées.</p>	<p>Los desembarcos comunicados de las pesquerías históricamente más importantes en torno al Reino Unido y el Mar del Norte y aguas costeras adyacentes (zonas del CIEM III y IV) han disminuido a niveles muy bajos en los últimos 30 a 40 años, en tanto que las capturas de las subregiones del CIEM en alta mar al oeste de Portugal (IX), el oeste del golfo de Vizcaya (VIII) y en torno a las Azores (X) han aumentado desde 1989 (Figura 7). Esto se atribuye a una disminución de las poblaciones costeras muy pescadas y mermadas y a la reorientación del esfuerzo hacia zonas costeras poco explotadas anteriormente.</p>
<p>French longliners have targeted <i>L. nasus</i> since the</p>	<p>Les palangriers français pratiquent la pêche ciblée de <i>L. nasus</i> depuis</p>	<p>Los palangreros franceses capturan <i>L. nasus</i> desde el decenio de</p>

Extracted from E15 prop-17	De F-15 prop-17	De S-15 prop-17
1970s in the Celtic Sea and Bay of Biscay. The fleet has declined from eleven vessels in 1994 to five in 2008. Mean CPUE fell from 1 to 0.73 kg per hook; from 3t/vessel in 1994, to less than 1t in 2005 (ICES WGEF 2008, Biseau 2006). Reported landings fell from over 1,092t in 1979 to 3–400t in the late 1990s to present (Figure 11). Spanish longliners took <i>L. nasus</i> opportunistically in the 1970s and since 1998, as bycatch from the longline swordfish fishery in the Mediterranean and Atlantic and from a target Blue Shark fishery that also catches Mako and Porbeagle (Biseau 2006, Bonfil 1994, Mejuto 1985, Mejuto and Garcés 1984, Lallemant-Lemoine 1991). Biomass and numbers have declined 94% and 93%, respectively, from baseline, and by more than 50% from the level in 1972, to well below MSY (Figures 13 and 14, ICCAT/ICES 2009).	les années 1970 en mer Celtique et dans le golfe de Gascogne. La flotte est passée de 11 navires en 1994 à cinq en 2008. Les CUEP moyennes sont tombées de 1 à 0,73 kg par hameçon et de 3 t/navire en 1994 à moins de 1 t en 2005 (CIEM WGEF 2008, Biseau 2006). Les débarquements notifiés sont passés de plus de 1092 t en 1979 à 300 à 400 t depuis la fin des années 1990 (fig.11). Les navires espagnols ont pêché <i>L. nasus</i> de façon opportuniste au cours des années 1970 et depuis 1998. Certains de ces débarquements sont des captures incidentes des palangriers pêchant l'espadon en Méditerranée et dans l'océan Atlantique (Bonfil 1994), et certains proviennent de pêches ciblées du requin bleu, qui capturent également des requins mako et des requins taupes communs (Biseau 2006, Bonfil 1994, Mejuto 1985, Mejuto et Garcés 1984, Lallemant-Lemoine 1991). La biomasse et le nombre ont diminué de 94% et 93% respectivement par rapport au niveau de référence, et de plus de 50% par rapport au niveau de 1972, et qu'ils se situent dès lors nettement au-dessous du RMD (fig. 13 et 14, CICTA/CIEM 2009).	1970 en el mar Celta y el golfo de Vizcaya. La flota se ha reducido de 11 embarcaciones en 1994 a cinco en 2008. El CPUE medio disminuyó de 1 a 0,73 kg por anzuelo; de 3 t/embarcación en 1994 a menos de 1 t en 2005 (WGEF del CIEM, 2008; Biseau, 2006). Los desembarcos comunicados disminuyeron de más 1.092 t en 1979 a 300-400 t a finales del decenio de 1990, hasta ahora (Figura 11). Los palangreros españoles capturaron <i>L. nasus</i> en acciones oportunistas en el decenio de 1970 y desde 1998 como captura incidental de la pesca de pez espada con palangre en el Mediterráneo y el Atlántico y de pesca directa de tiburón azul en que se captura también el tiburón azulejo y el marrajo sardinero (Biseau, 2006; Bonfil, 1994; Mejuto, 1985; Mejuto y Garcés, 1984; Lallemant-Lemoine, 1991). La biomasa y las cantidades habían disminuido un 94 y un 93%, respectivamente, desde la línea referencial, y más de un 50% desde el nivel de 1972, a bastante menos del RMS La realizaron la primera evaluación de esta población (Figuras 13 y 14, CICAA y ICEM 2009).
Northwest Atlantic	Atlantique Nord-Ouest	Atlántico noroccidental
Targeted <i>Lamna nasus</i> fishing started in 1961, when the Norwegian and subsequently the Faeroese shark longline fleets moved from the depleted Northeast Atlantic to the coast of New England and Newfoundland. Catches increased rapidly from ~1,900t in 1961 to > 9,000t in 1964 (Figure 15). By 1965 many vessels had switched to other species or fishing grounds because of the population decline (DFO 2001a). The fishery collapsed after six years, landing less than 1,000t in 1970. It took 25 years for only very limited recovery to take place. Norwegian and Faroese fleets have been excluded from Canadian waters since 1993. Canadian and US authorities reported all landings after 1995.	Les pêches ciblées de <i>Lamna nasus</i> ont commencé en 1961, suite à l'appauvrissement du stock de l'Atlantique Nord-Est, lorsque la flotte des palangriers norvégiens pêchant le requin a réorienté ses opérations vers les côtes de la Nouvelle-Angleterre et de Terre-Neuve. Les captures ont augmenté rapidement, passant d'environ 1900 t en 1961 à plus de 9000 t en 1964 (fig. 15). Dès 1965, de nombreux navires s'étaient tournés vers d'autres espèces ou s'étaient déplacés sur d'autres zones de pêche à cause du déclin de la population (DFO 2001a). Cette pêche s'est effondrée en six ans seulement, avec des débarquements inférieurs à 1000 t en 1970, et il a fallu 25 ans avant que l'on puisse constater un très léger redressement. Les flottes des îles Féroé et de la Norvège ont été exclues des eaux canadiennes depuis 1993. Les autorités du Canada et des Etats-Unis ont notifié tous les débarquements intervenus après 1995.	La pesca directa de <i>Lamna nasus</i> comenzó en 1961, cuando flotas de palangreros de tiburón noruegas y posteriormente feroesas se desplazaron del Atlántico nororiental agotado a la costa de Nueva Inglaterra y Terranova. Las capturas aumentaron rápidamente de ~1.900 t en 1961 a > 9.000t en 1964 (Figura 15). En 1965, muchas embarcaciones se dedicaron a otras especies o trasladaron a otros caladeros debido a la disminución de la población (DFO, 2001a). La pesquería se hundió después de seis años, desembarcando menos de 1.000 t en 1970. Se tardó 25 años en lograr una recuperación muy limitada. Las flotas noruegas y feroesas están excluidas de las aguas canadienses desde 1993. Las autoridades canadienses y estadounidenses informaron de todos los desembarcos después de 1995.
Three offshore and several inshore Canadian vessels entered the targeted Northwest Atlantic fishery in the 1990s. Catches of 1,000–2,000 t/year reduced population levels to a new low in under ten years: the	Dans les années 1990, trois navires canadiens de pêche côtière et plusieurs navires canadiens de pêche en haute mer se sont lancés dans la pêche ciblée dans l'Atlantique Nord-Ouest. Le volume des captures, qui a atteint 1000 à 2000 t/an, a ramené en moins de 10 ans	Tres barcos de pesca de altura y varios costeros canadienses iniciaron la pesca específica en el Atlántico noroccidental en el decenio de 1990. Las capturas de entre 1.000 y 2.000 t/año redujeron los niveles de población a un nuevo punto mínimo en

Extracted from E15 prop-17	De F-15 prop-17	De S-15 prop-17
<p>average size of sharks and catch rates were the smallest on record in 1999 and 2000, catch rates of mature sharks in 2000 were 10% of those in 1992, and biomass estimated as 11–17% of virgin biomass and fully recruited F as 0.26 (DFO 2001a). The annual catch quota was reduced for 2002–2007 to allow population growth (DFO 2001a, 2001b) and reduced again in 2006. Landings have since ranged from 139t to 229t. Total population numbers have remained relatively stable since 2002, although female spawners may have continued to decline slightly. ICCAT/CES (2009) estimate that spawning stock biomass (SSB) is now about 95–103% of its size in 2001 and the number of mature females 83% to 103% of the 2001 value (Figure 16), or 12–16 % of baseline.</p>	<p>la population à de nouveaux niveaux record vers le bas: en 1999 et 2000, la taille moyenne des requins et les taux de capture ont été les plus faibles jamais enregistrés, et en 2000 le nombre des captures de requins adultes a été inférieur de 10% à celui de 1992; la biomasse a été estimée à 11 à 17% de la biomasse vierge et le plein recrutement à 0,26 (DFO 2001a). Le quota annuel de captures a été réduit une première fois pour 2002 à 2007 afin de permettre la croissance de la population (DFO 2001a, 2001b), puis réduit de nouveau en 2006. Depuis, les débarquements ont été de 139 t à 229 t. La population totale est restée relativement stable depuis 2002, bien que le nombre de femelles frayeuses ait continué à baisser légèrement. La CICTA/CIEM (2009) estime que la biomasse du stock de géniteurs (BSG) est aujourd'hui comprise entre 95 et 103% de sa taille de 2001 et que le nombre de femelles parvenues à maturité sexuelle est compris entre 83% et 103% de ce qu'il était en 2001 (fig. 16), ou entre 12 à 16 % par rapport au niveau de référence.</p>	<p>menos de diez años: el tamaño medio de los tiburones y las tasas de capturas fueron los más pequeños registrados en 1999 y 2000; en 2000 las tasas de capturas de tiburones adultos habían quedado reducidas al 10% de las de 1992, y la biomasa se estimaba entre el 11 y el 17% de la biomasa virgen y F plenamente reclutados en 0,26 (DFO, 2001). El cupo anual de capturas se redujo en 2000-2007 para permitir el crecimiento de la población (DFO, 2001a, 2001b) y disminuyó de nuevo en 2006. Desde entonces, los desembarcos han variado entre 139 t y 229 t. Las cifras de la población total han permanecido relativamente estables desde 2002, si bien las hembras desovadoras pueden haber seguido disminuyendo ligeramente. La CICA y el CIEM (2009) estimaron que la biomasa de la población de desove (BPD) se sitúa ahora entre 95-103% de su tamaño en 2001, y el número de hembras maduras entre el 83 y el 103% del valor de 2001 (Figura 16), o sea, 12-16% de la línea referencial.</p>
<p>In addition to the Canadian quota of 185t, in 1999 a quota of 92t was set in the US EEZ, which is presumed to share the same stock. The TAC for all US fisheries was reduced to 11t, including a commercial quota of 1.7t, in 2008. tuna longliners from Taiwan Province of China, the Republic of Korea and Japan take a largely unknown bycatch of <i>L. nasus</i> on the high seas in the North Atlantic (ICES 2005). Most of the catch is reportedly discarded or landed at ports near the fishing grounds. Stocks and catches are "under investigation" (Fishery Agency of Japan 2004). Campana and Gibson (2008) note that the unreported Porbeagle bycatch observed on Japanese vessels could have amounted to ~200t in 2000 and 2001. Spanish catches are usually also unreported. These levels of combined Northwest Atlantic landings will prevent stock recovery.</p>	<p>Outre le quota canadien de 185 t, un petit quota de 92 t a été fixé en 1999 pour <i>L. nasus</i> dans la ZEE des Etats-Unis, censée faire partie du même stock. Les captures totales autorisées pour l'ensemble des pêches des Etats-Unis ont été ramenées à 11 t, y compris un quota commercial de 1,7 t, en 2008. Les captures incidentes de <i>L. nasus</i> en haute mer, dans l'Atlantique Nord, par des palangriers de la province chinoise de Taïwan, de la République de Corée et du Japon pêchant le thon sont en grande partie inconnues (CIEM 2005). La plupart de ces captures sont notifiées comme déchargées ou débarquées dans des ports proches des lieux de pêche. Les stocks et les captures "font actuellement l'objet d'une étude" (Administration des pêches, Japon 2004). Campana et Gibson (2008) notent que les captures incidentes non notifiées de requins-taupes communs observées à bord de navires japonais pourraient avoir atteint quelque 200 t en 2000 et 2001. Les captures espagnoles, elles non plus, ne sont habituellement pas notifiées. Ces niveaux de débarquements combinés dans l'Atlantique Nord-Ouest empêcheront le redressement du stock.</p>	<p>Además del cupo canadiense de 185 t, en 1999 se estableció un cupo de 92 t en la ZEE de Estados Unidos, que se supone que comparte la misma población. La CTP para todas las pesquerías estadounidenses se redujo a 11 t, incluido un cupo comercial de 1,7 t, en 2008. Palangreros de atún de la provincia china de Taiwan, la República de Corea y Japón obtuvieron una captura incidental en gran parte desconocida de <i>L. nasus</i> en alta mar en el Atlántico norte (CIEM, 2005). Según se informa, la mayoría de las capturas se descartaron o desembarcaron en puertos próximos a los caladeros. Las poblaciones y las capturas se "están investigando" (Organismo de Pesca de Japón, 2004). Campana y Gibson (2008) señalan que la captura incidental de marrajo sardinero no comunicada observada en embarcaciones japonesas podría haber ascendido a ~200 t en 2000 y 2001. Tampoco se informa normalmente de las capturas españolas. Estos niveles de desembarcos combinados del Atlántico noroccidental impedirán la recuperación de la población.</p>

Application of the criteria for amendment of Appendices I and II for commercially exploited aquatic species, with regard to Porbeagle shark *Lamna nasus*

CITES Standing Committee 58 [SC58 Sum. 7 (Rev. 1) (09/07/2009)] asked Parties, as they prepared for CoP15, to clearly define in their listing proposals how they have interpreted and applied Resolution Conf. 9.24 (Rev. CoP14), particularly paragraph B of Annex 2a of the Resolution, which deals with the inclusion of species in Appendix II in accordance with Article II paragraph 2a of the Convention. This paragraph has been interpreted differently by the CITES and FAO Secretariats, and by Parties.

The 15th meeting of the Conference of Parties also discussed this issue, introduced in CoP15 Doc.63, adopting Decision 15.28 (addressed to the Secretariat) and 15.29 (addressed to the Animals Committee), and further amending Res Conf 9.24 (Rev. CoP15). The discussion on the application of the listing criteria within CITES and FAO has continued since then within the framework set out by these Decisions. The following documents were prepared and discussed by the Animals Committee in July 2011: AC25 Doc. 10; AC25 Inf. 10 (Germany); AC25 Inf. 12 (FAO 2011, the report of a workshop on the application of criterion Annex 2a B), and in March 2012: AC26 Doc. 14. The latter meeting of the Animals Committee recognised the complexity of the issue and invited the Standing Committee to consider the merit of continuing a discussion on this matter within CITES.

Since these discussions are still underway with no recommendations available yet, this proposal has been developed on the basis of the EU position so far.

Interpreting the Text of Annex 2 a with regard to *Lamna nasus*

The proponents have carefully considered the FAO's views on how CITES Parties should interpret the criteria in Resolution Conf. 9.24 (SC 58 Inf. 6), and the interpretation suggested by the CITES Secretariat (SC 58 Doc. 43). In the view of the proponents, the definition of the term "decline" given in Annex 5 of Resolution Conf. 9.24 and the Footnote "Application of decline for commercially exploited aquatic species" is clearly relevant for Criterion A of Annex 2 a, and we have interpreted it according to the guidelines and the footnote.

Criterion A of Annex 2 a states that a species should be included in Appendix II "to avoid it becoming eligible for inclusion in Appendix I in the near future". According to Article II Paragraph 1 of the Convention, it shall be included in Appendix I if it is "threatened with extinction". According to Annex 1 of Res. Conf. 9.24 (Biological criteria for Appendix I), a species is threatened with extinction if it meets or is likely to meet at least one of the criteria A, B or C, with C specifying "a marked decline in the population size in the wild [...]". This term "decline" used in Criterion C for Appendix I is then further defined in Annex 5 (Definitions, explanations and guidelines) and specified for commercially exploited aquatic species in the abovementioned footnote.

By contrast, Criterion B of Annex 2 a does not refer to Appendix I. Criterion B states that a species should be included in Appendix II "to ensure that the harvest of specimens from the wild is not reducing the wild population to a level at which its survival might be threatened by continued harvesting or other influences." Whether the Appendix I definition of "decline" is relevant for Criterion B has been subject to different interpretations. The proponents do not wish to enter into this general discussion through the present document. However, the proponents would like to underline that Criterion B represents the outcome of a rewording of the previous version of Paragraph B of Annex 2a in Res. Conf. 9.24, which reads as follows:

"It is known, or can be inferred or projected, that harvesting of specimens from the wild for international trade has, or may have, a detrimental impact on the species by either

- i) exceeding, over an extended period, the level that can be continued in perpetuity; or*
- ii) reducing it to a population level at which its survival would be threatened by other influences."*

In the criteria working group at Johannesburg (20th Animals Committee, 2004) it was recognized that Criterion B of Annex 2 a in its current version encompasses both meanings of the abovementioned original text, i.e. paragraph i) and ii). With respect to paragraph ii) of the original criterion, decline is relevant with

respect to the special case of reducing a population to a level at which depensation might occur. Paragraph i) of the original criterion is a reference to long-term unsustainable harvesting that is known or might be inferred or projected and to the detrimental impact that such harvesting has, or may have, on the species.

This represented the understanding of European Community Parties when the revised criteria were adopted, and the proponents feel that this remains a valid interpretation of this criterion.

Resolution Conf. 9.24 (Rev. CoP 14) also recognizes the importance of the application of the precautionary approach in cases of uncertainty and indicates that the definitions, explanations and guidelines provided in Annex 5 should be interpreted in a flexible manner, taking account of the specific features of each species considered. This was highlighted by the Standing Committee at its 58th meeting, and the proponents have interpreted the Resolution accordingly in their listing proposal for *Lamna nasus*.

On this basis, with regard to the relevant stocks of *Lamna nasus* referred to in the proposal, Criterion B of Res. Conf. 9.24 Annex 2a is regarded to be met because:

- This species is of high biological vulnerability, falling within FAO's lowest productivity, and takes decades to recover from depletion, even under fisheries management;
- Exploitation in target fisheries is driven primarily by international trade demand for this species' meat, while fins and meat enter international trade from target and bycatch fisheries
- Stock assessments identify serious impacts of exploitation in the North Atlantic and Southwest Atlantic (possibly extending into Southeast Pacific), where populations depleted by target and bycatch fisheries qualify for listing in the CITES Appendices;
- Data are lacking on most other southern hemisphere stocks, but these populations are of lower biological productivity, even more vulnerable to depletion than northern stocks, and are also exploited by fisheries;
- *Lamna nasus* is taken in high seas IUU fisheries, which undermine conservation measures adopted by coastal fishing states;
- Improved management of all stocks is a high priority. As also pointed out by the 2009 FAO expert panel (FAO 2010), regulation of international trade through CITES listing can supplement traditional management measures, including by strengthening national efforts to keep harvesting for trade commensurate with stock rebuilding plans and improving the control of high seas catches through the use of certificates of introduction from the sea accompanied by non detriment findings, thus providing a significant contribution to the conservation of this species.

National management measures for porbeagle *Lamna nasus*

Argentina	Requires live bycatch of large sharks to be released alive.
Canada	<p>Pelagic shark Fisheries management plans in Atlantic Canada established non-restrictive catch guidelines of 1500t for <i>L. nasus</i> prior to 1997, followed by a provisional TAC of 1000t for 1997–1999, based largely on historic reported landings and observations of decreased recent catch rates (DFO 2001b). Following analytical stock assessments (Campana <i>et al.</i> 1999, 2001), the Shark Management Plan for 2002–2007 reduced the TAC to 250t, followed by a further reduction to 185t (60t bycatch, 125t directed fishery) from 2006. Stock projections (Figure 17) indicate that the population will eventually recover if harvest rates are kept under 4% (~185 mt, DFO 2005b). Finning is prohibited.</p> <p>The Committee on the Status of Endangered Wildlife in Canada (COSEWIC) designated <i>L. nasus</i> as Endangered in 2004 (COSEWIC 2004). The Federal Government of Canada declined to list it under Schedule 1 of Canada's Species at Risk Act because recovery measures were being implemented.</p>
European Community	<p>The conservation and management of sharks in EU waters falls under the European Common Fishery Policy, which manages fish stocks through a system of Total Allowable Catch (TAC or annual catch quotas) and reduction of fishing capacity. The Community Action Plan for the Conservation and Management of Sharks (CPOA, EU COM(2009) 40 final) sets out to rebuild depleted shark stocks fished by the EC fleet within and outside EC Waters. The CPOA's Shark Assessment Report pays particular attention to <i>L. nasus</i>, which has been under legally-binding EU management in EC and international waters since 2008.</p> <p>EC Regulation 40/2008 established a TAC for porbeagle taken in EC and international waters of I, II, III, IV, V, VI, VII, VIII, IX, X, XII and XIV of 581 t. In 2009, the TAC was reduced to 436 t (a decrease of 25%) and regulations stated that "<i>A maximum landing size of 210 cm (fork length) shall be respected</i>" (EC Regulation No 43/2009). The TAC was reduced to zero in 2010. Since 2012, EC Regulations 23/2010, 57/2011 and 44/2012 have prohibited fishing for porbeagle in EU waters and, for EU vessels, to fish for, to retain on board, to tranship and to land porbeagle in international waters.</p> <p>EC Regulation 1185/2003 prohibits the removal of shark fins of this species, and subsequent discarding of the body. This regulation is binding on EC vessels in all waters and non-EC vessels in Community waters.</p>
Malta	<i>L. nasus</i> is listed in appendices to the Flora, Fauna and Natural Habitats Protection Regulations 2006
New Zealand	<i>L. nasus</i> has been included in New Zealand's Quota Management System (QMS) since 2004, with an unrestrictive TAC set at 249t (Sullivan <i>et al.</i> 2005). Finning and discard of carcasses is permitted, but discards must be reported.
Norway	In 2007 Norway banned all direct fisheries for porbeagle, based on ICES advice. Until 2011, by-catch could be landed and sold. Since 2011, live specimens must be released and dead specimens can (not must) be landed. Weight and number of specimens landed must be reported. From 2011, the regulations also include recreational fishing. Since 2012, landings of porbeagle are not remunerated.
Spain	Included in Spanish National List of Endangered Species (RD 139/2011)
Sweden	It has been forbidden to catch and land porbeagle since 2004 (FIFS 2004:36)
USA	There is quota management for <i>L. nasus</i> in USA Atlantic waters. A 92t TAC was adopted in US waters in 1999 and reduced in 2008 to 11t for all US fisheries, including a commercial quota of 1.7t (NOAA NMFS 2011). When exceeded, the fishery is closed.

NOTE:

The above list is based upon consultation with range States and may be incomplete.

It excludes national regulations adopted by EU Member States in order to implement the zero TAC and other Community-level management measures, or by Barcelona Convention signatories and GFCM Contracting Parties implementing the listing in Annex II (Endangered or Threatened Species) of the Barcelona Convention Protocol concerning specially protected areas and biological diversity (SPA/BD) in the Mediterranean.

References

- Acuña, E., Villarroel, J.C. y Grau, R. 2002. Fauna Ictica Asociada a la Pesquería de Pez Espada (*Xiphias gladius* Linnaeus). *Gayana* (Concepc.), 66(2):263–267.
- Anonymous, 2008. Results of the International Expert Workshop on CITES Non-Detriment Findings. Cancun, Mexico, November 17th to 22nd, 2008. [http://www.conabio.gob.mx/institucion/cooperacion_internacional/TallerNDF/ Links-Documentos/WG-CS/WG8-Fishes/WG8-FR.pdf](http://www.conabio.gob.mx/institucion/cooperacion_internacional/TallerNDF/Links-Documentos/WG-CS/WG8-Fishes/WG8-FR.pdf)
- Anonymous, 2012. Response to Notification to the Parties No. 2011/049, Concerning Sharks. CITES AC26 Inf. 1. <http://www.cites.org/common/com/AC/26/E26-01i.pdf>.
- Anonymous, 2012. Report of the 2012 Shortfin mako stock assessment and ecological risk assessment meeting. http://www.iccat.es/Documents/Meetings/Docs/2012_SHK_ASS_ENG.pdf
- Babcock, E.A. and Cortes, E., 2010. Bayesian surplus production model applied to porbeagle catch, CPUE and effort data. *Collect. Vol. Sci. Pap. ICCAT*, 65(6): 2051-2057.
- Biais G. and Vollette J. 2009. CPUE of the French porbeagle fishery. ICES WGEF Working Document, 3 pp.
- Biseau, A. 2006. Untitled summary of french porbeagle fisheries and market data. Working Document, ICES Working Group on Elasmobranch Fishes.
- Bonfil, R. 1994. Overview of world elasmobranch fisheries. *FAO Fisheries Technical Paper* No. 341 119 pp.
- Buencuerpo, V., Rios, S., Moron, J. 1998. Pelagic sharks associated with the swordfish, *Xiphias gladius*, fishery in the eastern North Atlantic Ocean and the Strait of Gibraltar. *Fishery Bulletin* (96): 667–685.
- CCAMLR. 2006. Conservation of sharks. Conservation Measure 32-18, 2006. At www.ccamlr.org. Accessed on 14 May 2012 at http://www.ccamlr.org/pu/e/e_pubs/cm/11-12/32-18.pdf.
- Campana, S., L. Marks., Joyce, W., Hurley, P., Showell, M., and Kulka, D. 1999. An analytical assessment of the porbeagle shark (*Lamna nasus*) population in the northwest Atlantic. Canadian Science Advisory Secretariat. CSAS. Res. Doc.99/158.
- Campana, S., Marks, L., Joyce, W. and Harley, S. 2001. Analytical assessment of the porbeagle (*Lamna nasus*) population in the Northwest Atlantic, with estimates of long-term sustainable yield. Canadian Science Advisory Secretariat. CSAS Res. Doc. 2001/067. 17 pp.
- Campana, S.E. and W.N. Joyce. 2004. Temperature and depth associations of porbeagle shark (*Lamna nasus*) in the northwest Atlantic. *Fish. Oceanogr.* 13:52–64.
- Campana S. and J. Gibson. 2008. Catch and Stock Status of Porbeagle Shark (*Lamna nasus*) in the Northwest Atlantic to 2007, NAFO Doc. 08/36.
- Campana, S. E., Joyce, W. and Fowler, M. 2010a. Subtropical pupping ground for a cold-water shark. *Can. J. Fish. Aquat. Sci.* 67:769-773.
- Campana, S. E., Gibson, A. J. F., Fowler, M., Dorey, A., and Joyce, W. 2010b. Population dynamics of porbeagle in the northwest Atlantic, with an assessment of status to 2009 and projections for recovery. *Collect. Vol. Sci. Pap. ICCAT*, 65(6): 2109-2182.
- Campana, S.E., J. Brading, and W. Joyce. 2011. Estimation of pelagic shark bycatch and associated mortality in Canadian Atlantic fisheries. *DFO Can. Sci. Advis. Sec. Res. Doc.* 2011/067: vi + 19p.
- CITES 2006. Conservation and Management of Sharks: Implementation of CITES shark listings. AC22 Doc.17.2. 5pp. www.cites.org.
- Clarke, S. and Harley, S.J. 2010. A Proposal for a Research Plan to Determine the Status of the Key Shark Species. Secretariat of the Pacific Community (SPC), Ocean Fisheries Programme (OFP), Noumea, New Caledonia. WCPFC-SC6-2010/EB-WP-01.
- Compagno, L.J.V. 2001. Sharks of the World. Volume 2. Bullhead, mackerel and carpet sharks (Heterodontiformes, Lamniformes and Orectolobiformes). An annotated and illustrated catalogue of the shark species known to date. *FAO Species Catalogue for Fisheries Purposes* (1): i–v, 1–269.

- COSEWIC 2004. COSEWIC assessment and status report on the porbeagle shark *Lamna nasus* in Canada. Committee on the Status of Endangered Wildlife in Canada. Ottawa. viii + 43 pp. (www.sararegistry.gc.ca/status/status_e.cfm).
- De la Serna, J.M., Valeiras, J., Ortiz, J.M., Macias D., 2002. Large Pelagic sharks as by-catch in the Mediterranean Swordfish Longline Fishery : some biological aspects. NAFO SCR Doc.02/137 Serial No. N4759.
- Deynat, P. 2010. *Les requins: Identification des nageoires*. Éditiones Quae. 464 pp.
- DFO. 2001a. Porbeagle shark in NAFO subareas 3–6. *Scientific Stock Status Report*. B3-09. 9 pp.
- DFO. 2001b. Canadian Atlantic Pelagic Shark Integrated Fishery Management Plan, 2000–2001. Pp. 1–72.
- DFO, 2005a. Stock assessment report on NAFO Subareas 3–6 porbeagle shark. *CSAS Science Advisory Report 2005/044*.
- DFO, 2005b. Recovery Assessment Report on NAFO Subareas 3–6 Porbeagle Shark. *CSAS Science Advisory Report 2005/043*.
- DFO 2006. Potential Socio-economic Implications of Adding Porbeagle Shark to the List of Wildlife Species at Risk in the *Species at Risk Act* (SARA). Fisheries and Oceans Canada, Policy and Economics Branch – Maritimes Region, Dartmouth, Nova Scotia.
- Domingo, A., O. Mora y M. Cornes. 2001. Evolución de las capturas de elasmobranquios pelágicos en la pesquería de atunes de Uruguay, con énfasis en los tiburones azul (*prionace glauca*), moro (*Isurus oxyrinchus*) y porbeagle (*Lamna nasus*). Col. Vol. Sci. Pap. ICCAT 54(4): 1406–1420.
- Domingo, A. 2000. Los Elasmobranquios Pelágicos Capturados por la flota de longline Uruguay. In: M. Rey (Editor). Consideraciones Sobre la Pesca Incidental Producida por la Actividad de la Flota Atunera Dirigida a Grandes Pelágicos. “Plan De Investigación Pesquera”. Inape – Pnud Uru/92/003.
- Dulvy, N.K., Baum, J.K., Clarke, S., Compagno, L.J.V., Cortés, E., Domingo, A., Fordham, S., Fowler, S., Francis, M.P., Gibson, C., Martinez, J., Musick, J.A., Soldo, A., Stevens, J.D. and Valenti S. 2008. You can swim but you can't hide: the global status and conservation of oceanic pelagic sharks and rays. *Aquat. Conserv. Mar. Freshw. Ecosyst.* 18, 459–482.
- FAO. 2000. An appraisal of the suitability of the CITES criteria for listing commercially-exploited aquatic species. FAO Circulaire sur les pêches No. 954, FAO, Rome. 76pp.
- FAO. 2001. Report of the second technical consultation of the CITES criteria for listing commercially exploited aquatic species. FAO Fisheries Report No. 667. FAO, Rome.
- FAO–FIGIS. 2012. FISHSTAT Capture production statistics. FAO website, downloaded 2012.
- FAO–FIGIS. 2012a. *Lamna nasus* Species Fact Sheet. In: A world overview of species of interest to fisheries. FIGIS Species Fact Sheets. SIDP -Species Identification and Data Programme. FAO–FIGIS. <<http://www.fao.org/figis/servlet/species?fid=2798>> downloaded 2012.
- FAO 2010a. Report of the Third FAO Expert Advisory Panel for the assessment of proposals to amend Appendices I and II of CITES concerning commercially-exploited aquatic species. Rome, 7–12 December 2009. FAO Fisheries and Aquaculture Report No.FIRF/R925.
- FAO 2010b. Report to COFI 29 on Progress in the implementation of the Code of Conduct for Responsible Fisheries and related instruments, including International Plans of Action and strategies, and other matters. COFI/2011/2, FAO, Rome.
- FAO 2011. Report of the FAO workshop to review the application of CITES Criterion Annex 2 a B to commercially-exploited aquatic species. Rome, 19–21 April 2011. *FAO Fisheries and Aquaculture Report No.976*. FAO, Rome, Italy.
- Fernández-Costa, J. and Mejuto, J. 2009. A short note on the FAO statistics for the porbeagle shark (*Lamna nasus*) in the Atlantic and its relation to other lamnid. ICCAT SCRS/2009/062.
- Ferretti, F. R. A. Myers, F. Serena and H. K. Lotze. 2008. Loss of Large Predatory Sharks from the Mediterranean Sea. *Conservation Biology*. doi: 10.1111/j.1523-1739.2008.00938.x.
- Fischer, W., Bauchot, M.-L. and Schneider, M.-L. 1987. *Fiches FAO d'identification des espèces pour les besoins de la pêche. Méditerranée et Mer Noire*. Zone de pêche 37. Volume 2. Vertébrés. FAO, Rome. 761–1530.

- Fishery Agency of Japan. 2004. Salmon Shark *Lamna ditropis*; Porbeagle Shark *Lamna nasus*, Pacific, Atlantic and Indian Oceans. In: The current status of international fishery stocks (summarised edition). Pp. 82–83. Fishery Agency, Japan.
- Fleming, Elizabeth. H. and Papageorgiou, P.A. 1997. *Shark fisheries and trade in Europe*. TRAFFIC Europe. 78 pp.
- Fong, Q.S.W. and J.L. Anderson (1998). Assessment of Hong Kong shark fin trade. Department of Environmental and Natural Resource Economics, University of Rhode Island, Kingston, 9 pp.
- Forselledo Caldera. R. (2012). Estructura poblacional y aspectos reproductivos del tiburón pinocho *Lamna nasus* (Bonnaterre, 1788) en el Atlántico Sudoccidental. Pasantía de grado para optar a la Licenciatura en Ciencias Biológicas, opción Oceanografía, Facultad de Ciencias-UDELAR (Convenio DINARA-Facultad de Ciencias, Uruguay).
- Francis, M.P., Campana, S.E. and Jones, C.M. 2007. Age under-estimation in New Zealand Porbeagle sharks (*Lamna nasus*): is there an upper limit to ages that can be determined from shark vertebrae? *Marine and Freshwater Research*, 58, 10-23.
- Francis, M. P. and Duffy, C. (2005). Length at maturity in three pelagic sharks (*Lamna nasus*, *Isurus oxyrinchus* and *Prionace glauca*) from New Zealand. *Fishery Bulletin* 103: 489–500.
- Francis, M. P., Natanson, L. J. and Campana, S. E. 2008: The biology and ecology of the Porbeagle shark *Lamna nasus*. In: Pikitch, E. K. and M. Camhi (Eds). *Sharks of the open ocean*. Blackwell Scientific Publications.
- García Núñez, N.E. 2008. Sharks: Conservation, Fishing and International Trade. Bilingual edition. Dirección General para la Biodiversidad. Ministerio de Medio Ambiente, y Medio Rural y Marino, Madrid. 111 pp. <http://www.cites.org/common/com/AC/24/EF24i-05.pdf>
- Gauld, J.A. (1989). Records of porbeagles landed in Scotland, with observations on the biology, distribution and exploitation of the species. *Scottish Fisheries Research Report* 45, ISSN 0308 8022. 15 pp.
- Gibson, A.J. and S. E. Campana. 2005. Status and recovery potential of porbeagle shark in the Northwest Atlantic. CSAS Res. Doc. 2005/53. 179 pp.
- Griggs, L.H., Baird, S.J., Francis, M.P. (2008). Fish bycatch in New Zealand tuna longline fisheries in 2005-06. New Zealand Fisheries Assessment Report 2008/27. 47p.
- Hazin, F., M. Broadhurst, A. Amorim, C. Arfelli and A. Domingo. 2008. Catch of pelagic sharks by subsurface longline fisheries in the South Atlantic Ocean: A review of available data with emphasis on Uruguay and Brazil In: “*Sharks of the open Ocean*” M. Camhi and E. Pikitch (Eds.) Blackwell Scientific, New York.
- Hernandez, S., P. A. Haye and M. S. Shivji (2008) Characterization of the pelagic shark-fin trade in north-central Chile by genetic identification and trader surveys, *Journal of Fish Biology* 73, 2293–2304
- ICCAT SCRS/ICES 2009. Report of the 2009 Porbeagle stock assessments meeting. Copenhagen, Denmark, June 22 to 27, 2009. SCRS/2009/014. 57 pp.
- ICES. 2005. Report of the ICES Advisory Committee on Fishery Management. Copenhagen, Denmark.
- ICES WGEF 2008. Report of the Working Group on Elasmobranch Fishes, 3-6 March 2008. ICES CM 2008/ACOM:16. www.ices.dk/products/CMdocs/CM-2008/ACOM/ACOM1608.pdf
- ICES WGEF 2011. Report of the Working Group on Elasmobranch Fishes, 20–24 June 2011. ICES CM 2011/ACOM:19. 492 pp. www.ices.dk/reports/ACOM/2011/WGEF/wgef_2011.pdf
- ICES WGEF 2012. Draft Report of the Working Group on Elasmobranch Fishes, Lisbon, 19-26th June 2012.
- INIDEP. 2009. Análisis de las capturas de *Squalus acanthias* y *Lamna nasus* en embarcaciones congeladoras y factorías (convencional y surimera) con observadores a bordo. Periodo 2003 - 2006. 5th January 2009, pp. 12.
- Jensen, C. F., L.J. Natanson, H.L. Pratt, N.E. Kohler, and S.E. Campana. 2002. The reproductive biology of the porbeagle shark, *Lamna nasus*, in the western North Atlantic Ocean. *Fish. Bull.* 100:727–738.
- Joyce, W., S.E. Campana, L.J. Natanson, N.E. Kohler, H.L. Pratt, and C.F. Jensen. 2002. Analysis of stomach contents of the porbeagle shark (*Lamna nasus*) in the northwest Atlantic. *ICES J. Mar. Sci.* 59:1263–1269.

- Kohler, N.E., P.A. Turner, J.J. Hoey, L.J. Natanson, and R. Briggs. 2002. Tag and recapture data for three pelagic shark species, blue shark (*Prionace glauca*), shortfin mako (*Isurus oxyrinchus*), and porbeagle (*Lamna nasus*) in the North Atlantic Ocean, ICCAT Collective Volume of Scientific Papers SCRS/2001/064 1231–1260.
- Lack, M. 2006. Conservation of Spiny Dogfish *Squalus acanthias*: a role for CITES? TRAFFIC Oceania.
- Lack, M. and Sant G. (2011). *The Future of Sharks: A Review of Action and Inaction*. TRAFFIC International and the Pew Environment Group.
- Lallemant-Lemoine, L. 1991. Analysis of the French fishery for porbeagle *Lamna nasus* (Bonnaterre, 1788). ICES-CM-1991/G:71, 10 pp.
- Marconi, M., De Maddalena, A. 2001. On the capture of a young porbeagle, *Lamna nasus* (Bonnaterre, 1788), in the western Adriatic Sea. *Annales, Ser.hist.nat.* 11, 2 (25): 179–184
- Matsumoto, H. 2005. Report of observer program for Japanese tuna longline fishery in the Atlantic Ocean from August 2004 to January 2005, Col. Vol. Sci. Rap. ICCAT, 59(2): 663–681).
- Matsunaga, H. 2009. CPUE trend for Porbeagle caught by the Japanese tuna longline in the SBT fishery ground during 1992-2007. SCRS 2009-91. 6 pp.
- Matsunaga, H. and H. Nakano 2002. Preliminary results of standardized CPUE for porbeagles caught by Japanese longline fishery in the Atlantic Ocean. Col. Vol. Sci. Pap. ICCAT, 54(4): 1381–1385. Available at http://www.iccat.es/Documents/CVSP/CV054_2002/no_4/CV054041381.pdf
- Matsunaga, H. and H., Nakano 2005. Estimation of shark catches by Japanese tuna longline vessels in the Atlantic Ocean. Col. Vol. Sci. Pap. ICCAT 58(3): 1096–1105. Available at http://www.iccat.es/Documents/CVSP/CV058_2005/no_3/CV058031096.pdf.
- McCoy, M.A. and H. Ishihara (1999). *The Socio-economic Importance of Sharks in the U.S. Flag Areas of the Western and Central Pacific* (Administrative Report AR-SWR-99-01), prepared for U.S. Department of Commerce, National Marine Fisheries Service, Southwest Region, Long Beach, California, United States.
- Megalofonou, P., Damalas, D., Yannopoulos, C., De Metrio, G., Deflorio, M., De La Serna, J.M., Macias, D. 2000. By catches and discards of sharks in the large pelagic fisheries in the Mediterranean Sea. Final report of the Project No 97/50 DG XIV/C1, Comm. Of the Eu. Communities.
- Mejuto, J. 1985. Associated catches of sharks, *Prionace glauca*, *Isurus oxyrinchus* and *Lamna nasus*, with NW and N Spanish swordfish fishery in 1984. ICES C.M. 1985/H:42: 16pp.
- Mejuto, J., and A. G. Garcés. 1984. Shortfin mako, *Isurus oxyrinchus*, and porbeagle, *Lamna nasus*, associated with longline swordfish fishery in NW and N Spain. ICES Council Meeting 1984/G 72:1-10.
- Ministry of Fisheries. 2005. New Zealand Gazette of Thursday, November 3 2005. Issue No. 184. Wellington, New Zealand.
- MFSC 2011. Ministry of Fisheries Science Group. Highly Migratory Species Stock Assessment Report. (Unpublished report held in NIWA Greta Point Library, Wellington, New Zealand.)
- MFSC, 2008. Ministry of Fisheries, Science Group (Comps.). Report from the Mid-Year Fishery Assessment Plenary, November 2008: stock assessments and yield estimates. (Unpublished report held in NIWA Greta Point Library, Wellington, New Zealand.)
- Natanson, L.J., Mello, J.J. and Campana, S.E. 2002. Validated age and growth of the porbeagle shark (*Lamna nasus*) in the western North Atlantic Ocean. *Fishery Bulletin* **100**, 266–278.
- NOAA NMFS. 2011. www.nmfs.noaa.gov/pr/pdfs/species/porbeagleshark_detailed.pdf
- Orsi Relini L. & Garibaldi F. 2002. Pups of Lamnid sharks from the Ligurian Sea: morphological and biometrical characteristics of taxonomic value. In M. Vacchi, G. La Mesa, F. Serena & B. Seret (eds.) *Proc. 4th Elasm. Assoc. Meet.*, Livorno (Italy) 2000. ICRAM, ARPAT & SFI: 199.
- Pade, N., Sarginson, J., Antsalo, M., Graham, S., Campana, S., Francis, M., Jones, C., Sims, D., and Noble, L. 2006. Spatial ecology and population structure of the porbeagle (*Lamna nasus*) in the Atlantic: an integrated approach to shark conservation. Poster presented at 10th European Elasmobranch Association Science Conference. 11–12 November 2006. Hamburg, Germany.
- Pew Environment Group. 2012. Identifying Shark Fins: Oceanic Whitetip, Porbeagle and Hammerheads.

- Pons, M. and Domingo, A. 2010. Standardized CPUE of Porbeagle shark (*Lamna nasus*) caught by the Uruguayan pelagic longline fleet (1982-2008). *Collect. Vol. Sci. Pap. ICCAT*, 65(6): 2098-2108.
- Rose, D.A. 1996. *An overview of world trade in sharks and other cartilaginous fishes*. TRAFFIC International. 106 pp.
- Rosser, A.R. & Haywood, M.J. (compilers). 2002. Guidance For CITES Scientific Authorities: Checklist to assist in making non-detriment findings for Appendix II exports. IUCN, Gland, Switzerland and Cambridge, U.K. 146pp.
- Saunders R.A., Royer F., and Clarke M.W. (2011) Winter migration and diving behaviour of porbeagle shark, *Lamna nasus*, in the northeast Atlantic. *ICES Journal of Marine Science* 68(1): 166-174
- Scacco, U., I. Consalvo, S. DiMuccio and L. Tunesi. 2012. On the by-catch of two porbeagle sharks *Lamna nasus* in the central Adriatic Sea. *Marine Biodiversity Records*, 5, e61 doi:10.1017/S1755267212000127.
- Serena, F. & Vacchi, M. 1997. Attività di studio sui grandi pesci cartilaginei dell'alto Tirreno e Mar Ligure nell'ambito del programma L.E.M. (Large elasmobranchs monitoring). *Quad. Civ. Staz. Idrobiol.* N. 22: 17-21
- Shivji, M.S. 2010. DNA forensic applications in shark management and conservation. In: *Sharks and their Relatives II: Biodiversity, Adaptive Physiology and Conservation*. Eds. J.C. Carrier, M.R. Heithaus and J.A. Musick. Pp 593-610. CRC Press.
- Shivji, M., Clarke, S., Pank, M., Natanson, L., Kohler, N., and Stanhope, M. 2002. Rapid molecular genetic identification of pelagic shark body-parts conservation and trade-monitoring. *Conservation Biology* 16(4): 1036-1047.
- Smith, S. E., Au, D. W. and Show, C. 2008. Intrinsic Rates of Increase in Pelagic Elasmobranchs, in *Sharks of the Open Ocean: Biology, Fisheries and Conservation* (eds M. D. Camhi, E. K. Pikitch and E. A. Babcock), Blackwell Publishing Ltd., Oxford, UK. doi: 10.1002/9781444302516.ch25
- Soldo, A. & I. Jardas. 2002. Large sharks in the Eastern Adriatic. In M. Vacchi, G. La Mesa, F. Serena & B. Seret (eds.) *Proc. 4th Elasm. Assoc. Meet.*, Livorno 2000. ICRAM, ARPAT & SFI: 141-155.
- Sonu, S.C. 1998. Shark fisheries, trade, and market of Japan. *NOAA Technical Memorandum NMFS*.
- STECF 2006. Report of subgroup on porbeagle. European Scientific, Technical and Economic Committee on Fisheries. Brussels.
- Stevens, J.D. (1990). Further results from a tagging study of pelagic sharks in the north-east Atlantic. *Journal of the Marine Biological Association of the United Kingdom* 70, 707-720.
- Stevens, J.D., Bonfil, R., Dulvy, N.K. and Walker, P.A. 2000. The effects of fishing on sharks, rays, and chimaeras (chondrichthyans), and the implications for marine ecosystems. *ICES Journal of Marine Science*, Volume 57, Issue 3, 476-494 pp.
- Stevens, J., Fowler, S.L., Soldo, A., McCord, M., Baum, J., Acuña, E., Domingo, A. & Francis, M. 2005. *Lamna nasus*. In: IUCN 2012. *2012 IUCN Red List of Threatened Species*. <www.iucnredlist.org>.
- Stevens, J. D., and Wayte, S. E. (2008). The bycatch of pelagic sharks in Australia's tuna longline fisheries. In: *Sharks of the Open Ocean: Biology, Fisheries and Conservation*. Eds M.D. Camhi, E.K. Pikitch and E.A. Babcock. Blackwell Publishing, Oxford, U.K.
- Stevens, J. D., and Wayte, S. E. (1999). A review of Australia's pelagic shark resources. FRDC Project No. 98/107. Fisheries Research and Development Corporation, Canberra.
- Sullivan, K. J., P. M. Mace, N. W. M. Smith, M. H. Griffiths, P. R. Todd, M. E. Livingston, S. Harley, J. M. Key & A. M. Connell (ed.). 2005. Report from the Fishery Assessment Plenary, May 2005: stock assessments and yield estimates. Ministry of Fisheries, Wellington. 792 pp.
- Svetlov, M.F. (1978). The porbeagle, *Lamna nasus*, in Antarctic waters. *Journal of Ichthyology* 18 (5), 850-851.
- Testerman, C., Richards, V., Francis, M., Pade, N., Jones, C., Noble, L. and Shivji, M. 2007. Global phylogeography of the porbeagle shark (*Lamna nasus*) reveals strong genetic separation of northern and southern hemisphere populations. Abstract presented at the American Elasmobranch Society Annual Conference 2007.
- Vannuccini, S. 1999. Shark utilization, marketing and trade. *FAO Fisheries Technical Paper*. No. 389. Rome, FAO. 470 pp.

- Van Wijk, E.M. and R. Williams (2003). Fishery and invertebrate by-catch from Australian fisheries for *D. eleginoides* and *C. gunnari* in Division 58.5.2. CCAMLR WG-FSA 03/73. 26 pp.
- Vas, P. and Thorpe, T. 1998. Commercial landings of sharks in South-Western England. *Shark News* 12: November 1998.
- WCPFC 2010. Conservation and Management Measures for Sharks. Conservation and Management Measure 2010-07. Western and Central Pacific Fisheries Commission.

Fin identification guide (3 pages)

Three steps to using this guide

- Step 1. Distinguish 1st dorsal fins from other highly-valued traded fins: pectoral fins and lower caudal lobes (see below).
- Step 2. Look for white 1st dorsal fin markings, and use the flowchart on Page 3 to identify either porbeagle or oceanic whitetip sharks or exclude many species with black fin markings.
- Step 3. Take several simple measurements (Page 4) to help identify hammerhead 1st dorsal fins, which are much taller than they are broad and are dull brown or light grey.

Step 1: Distinguish 1st dorsal fins from pectoral fins and lower caudal lobes

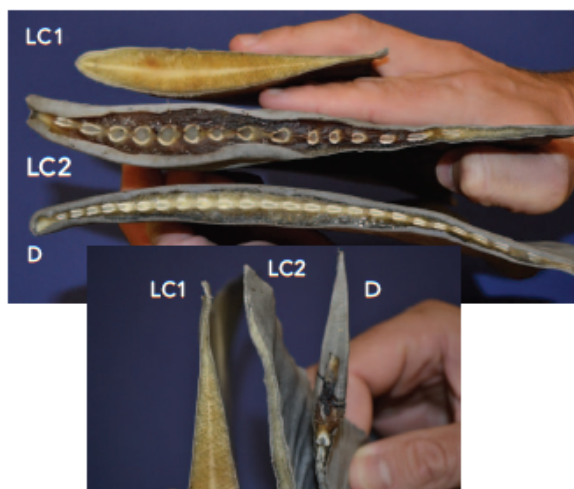
a. Check the fin color on each side

Dorsal fins are the same color on both sides (see right and left side views below). In contrast, pectoral fins are darker on the top side (dorsal view) and lighter underneath (ventral view); (see both views below).



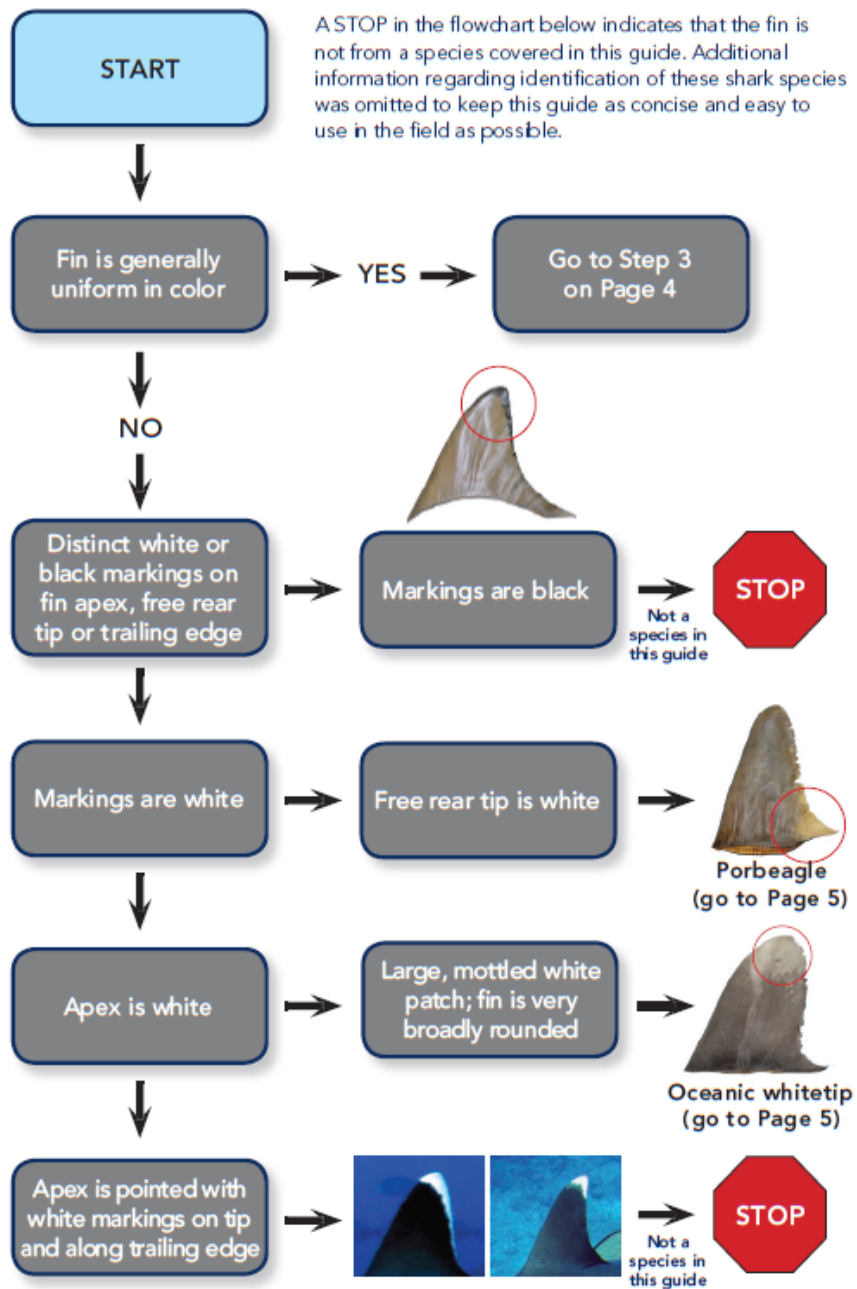
b. Check the base of the fin

Dorsal fins (D) have a continuous row of closely spaced cartilaginous blocks running along almost the entire fin base. When looking at a cross section of the base of a lower caudal lobe (LC1), there is typically only a yellow, "spongy" material called ceratotrichia, which is the valuable part of the lower caudal lobe. In some lower caudal lobes (LC2) there may be a small number of the cartilaginous blocks, but they are usually widely spaced and/or occur only along part of the fin base. Usually the lower caudal lobe has been cut along its entire base when removed from the shark; in contrast, dorsal fins frequently have a free rear tip that is fully intact.



Source: Anonymous. 2012. *Identifying shark fins (oceanic whitetip, porbeagle and hammerheads)*. Pew Environment Group, USA. Pew Environment Group —901 E St. NW, Washington, DC 20004, and School of Marine and Atmospheric Sciences —Stony Brook, NY 11794-5000. USA.

Step 2: Identify porbeagle and oceanic whitetip fins



Porbeagle *Lamna nasus*

IUCN Red List
Designation **VULNERABLE**



1st dorsal fin: dark blue/black to dark greyish brown, rounded apex with white patch on lower trailing edge onto free rear tip



Pectoral fins: short, rounded at apex; ventral surface has dusky coloration from apex throughout midsection of fin and along leading edge



Dorsal view
(top)



Ventral view
(underneath)



IUCN Red List Designations: NE Atlantic and the Mediterranean subpopulations are Critically Endangered, and the NW Atlantic subpopulation is designated as Endangered

Oceanic Whitetip *Carcharhinus longimanus*

IUCN Red List
Designation **VULNERABLE**



1st dorsal fin: large and broadly rounded (paddle-like); mottled white color at apex



Pectoral fins: long, broadly rounded at apex; dorsal surface has mottled white color at apex; ventral surface is typically white but can have mottled brown coloration

- mottled white color also present on caudal fin (upper and lower lobe)
- very small juveniles may have mottled black coloration on dorsal, pectoral and caudal fins



Dorsal view
(top)



Ventral view
(underneath)



IUCN Red List Designations: NW Atlantic and Central Atlantic subpopulations are designated as Critically Endangered

Consultations with Range States

Responses were received from the following Range States, Secretariats and Management bodies. Additional information was provided by several of these bodies and incorporated to the extent possible (within the constraints of the 12 page limit on the length of proposal).

Australia

Canada

Croatia

Monaco

New Zealand

Norway

South Africa

Tunisia

Turkey

USA

General Fisheries Committee for the Mediterranean